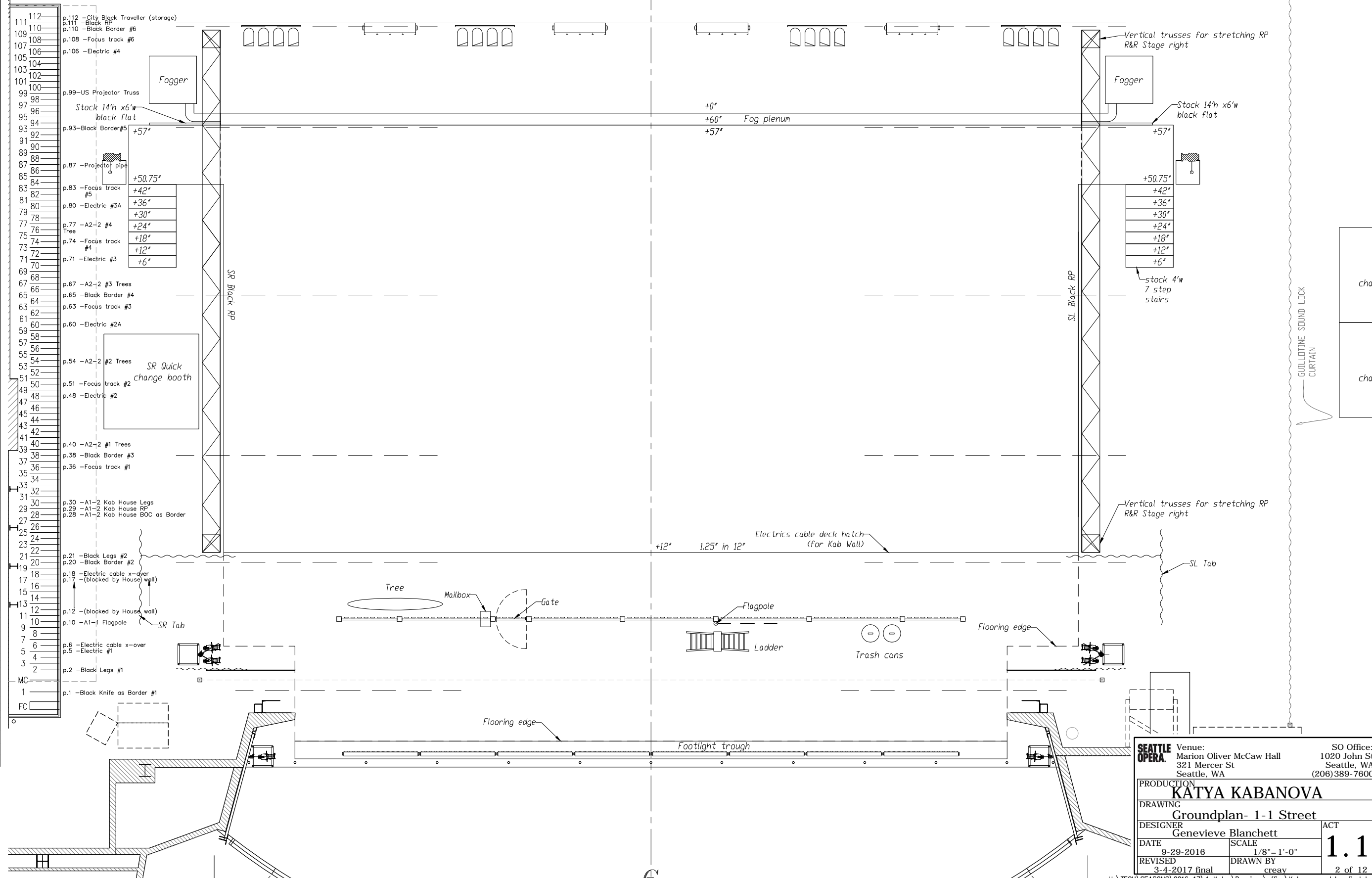


# HANG CHART

PIPE	DESCRIPTION	ACT
112	CITY BLACK TRAVELER (Storage)	
111	BLACK RP	ALL
110	BLACK BORDER #6	ALL
109		
108	FOCUS TRACK #6	ALL
107		
106	4th ELECTRIC	ALL
105		
104		
103		
102		
101		
100		
99	US PROJECTOR TRUSS	1-2
98		
97		
96		
95		
94	BLACK BORDER #5	ALL
93		
92		
91		
90		
89		
88		
87	PROJECTOR PIPE	ALL
86		
85		
84	FOCUS TRACK #5	ALL
83		
82		
81	3A ELECTRIC	ALL
80		
79		
78	A2-2 #4 TREE	2-2
77		
76		
75	FOCUS TRACK #4	ALL
74		
73		
72		
71	3rd ELECTRIC	ALL
70		
69		
68	A2-2 #3 TREES	2-2
67		
66	BLACK BORDER #4	ALL
65		
64	FOCUS TRACK #3	ALL
63		
62	2A ELECTRIC	ALL
61		
60		
59		
58	A2-2 #2 TREES	2-2
57		
56		
55		
54		
53	FOCUS TRACK #2	ALL
52		
51		
50	2nd ELECTRIC	ALL
49		
48		
47		
46		
45		
44	A3-1 BIG TREE	3-1
43		
42		
41	A2-2 #1 TREES	2-2
40		
39	BLACK BORDER #3	ALL
38		
37	FOCUS TRACK #1	ALL
36		
35		
34		
33		
32		
31		
30	A1-2 KAB HOUSE LEGS	1-2
29	A1-2 KAB HOUSE RP	1-2
28	A1-2 KAB HOUSE BOC AS BORDER	1-2
27		
26		
25		
24		
23		
22		
21	BLACK LEGS #2	
20	BLACK BORDER #2	ALL
19		
18	BLACKED BY A1-2 KAB WALL	ALL
17		
16		
15		
14		
13	BLACKED BY A1-2 KAB WALL	ALL
12		
11	A1-1 FLAGPOLE	1-1
10		
9		
8		
7		
6	ELECTRIC CABLE X-OVER	ALL
5	1st ELECTRIC	ALL
4		
3		
2	BLACK LEGS #1	ALL
MC	HOUSE MAIN DRAPE	
1	BLACK KNIFE as BORDER #1	ALL
Spot	SO TITLE SCREEN (3'x24' @ +29'-10")	
FC	FIRE CURTAIN	



- GRID NOTES**
- 1) Grid Capacity = 200lb per Sq. Foot
  - 2) 30 @ point hoists = 750lb capacity ea.
- LINESSET NOTES**
- 1) All pipe lengths 80'-0"
  - 2) Arbor height = 12'-0"
  - 3) Capacity= 2000 lbs max. (907.18 kg)

**SEATTLE OPERA** Venue: Marion Oliver McCaw Hall  
321 Mercer St  
Seattle, WA

SO Office: 1020 John St  
Seattle, WA  
(206)389-7600

**PRODUCTION**  
**KATYA KABANOVA**

**DRAWING**  
**Groundplan- 1-1 Street**

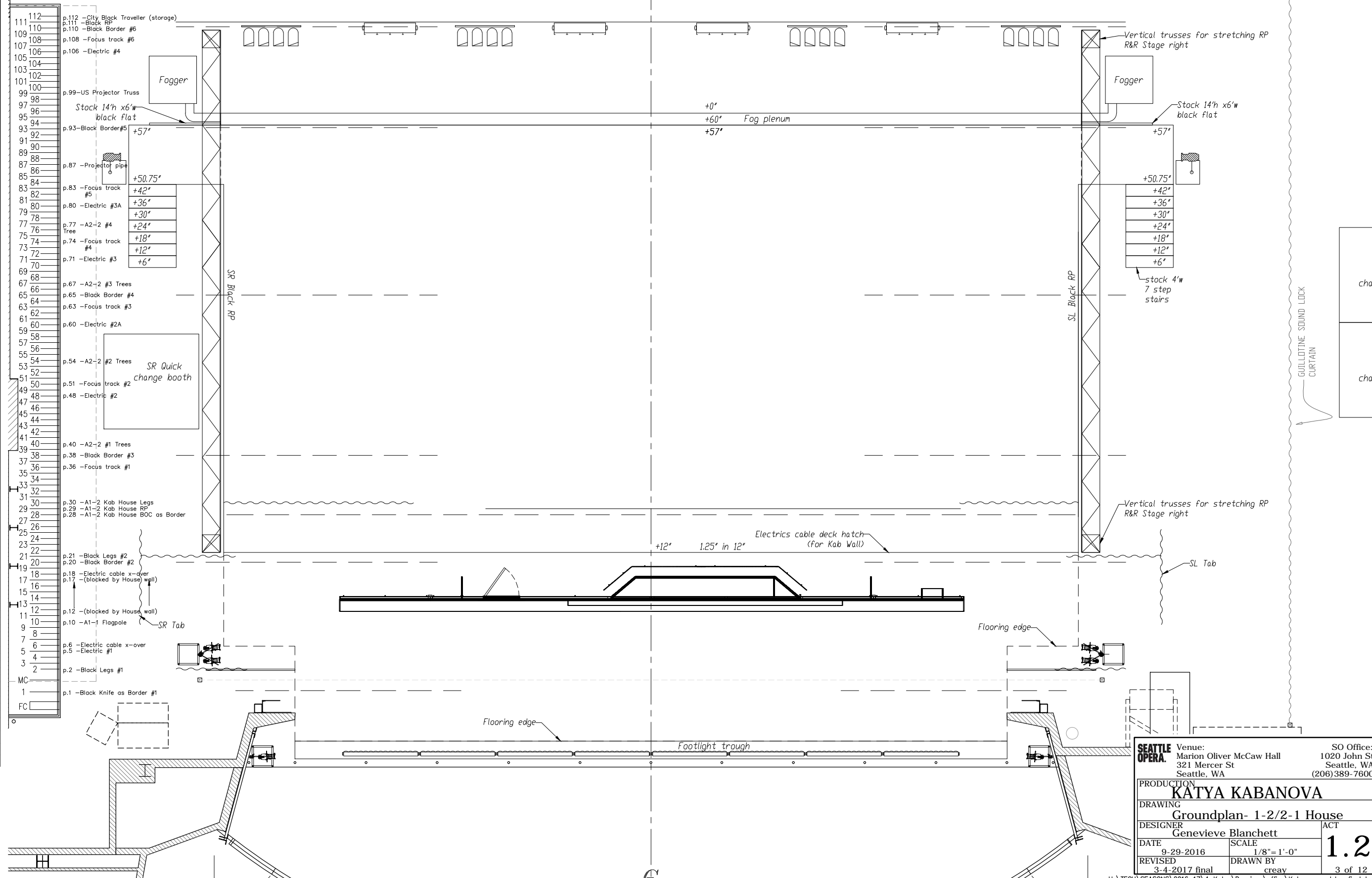
**DESIGNER**  
Genevieve Blanchett

**DATE** 9-29-2016 **SCALE** 1/8"=1'-0" **ACT** 1.1

**REVISED** 3-4-2017 final **DRAWN BY** creay **2 of 12**

# HANG CHART

PIPE	DESCRIPTION	ACT
112	CITY BLACK TRAVELER (Storage)	
111	BLACK RP	ALL
110	BLACK BORDER #6	ALL
109		
108	FOCUS TRACK #6	ALL
107		
106	4th ELECTRIC	ALL
105		
104		
103		
102		
101		
100		
99	US PROJECTOR TRUSS	1-2
98		
97		
96		
95		
94	BLACK BORDER #5	ALL
93		
92		
91		
90		
89		
88		
87	PROJECTOR PIPE	ALL
86		
85		
84	FOCUS TRACK #5	ALL
83		
82		
81	3A ELECTRIC	ALL
80		
79		
78	A2-2 #4 TREE	2-2
77		
76		
75	FOCUS TRACK #4	ALL
74		
73		
72		
71	3rd ELECTRIC	ALL
70		
69		
68	A2-2 #3 TREES	2-2
67		
66	BLACK BORDER #4	ALL
65		
64	FOCUS TRACK #3	ALL
63		
62	2A ELECTRIC	ALL
61		
60		
59		
58	A2-2 #2 TREES	2-2
57		
56		
55		
54		
53	FOCUS TRACK #2	ALL
52		
51		
50	2nd ELECTRIC	ALL
49		
48		
47		
46		
45		
44	A3-1 BIG TREE	3-1
43		
42		
41	A2-2 #1 TREES	2-2
40		
39	BLACK BORDER #3	ALL
38		
37	FOCUS TRACK #1	ALL
36		
35		
34		
33		
32		
31		
30	A1-2 KAB HOUSE LEGS	1-2
29	A1-2 KAB HOUSE RP	1-2
28	A1-2 KAB HOUSE BOC AS BORDER	1-2
27		
26		
25		
24		
23		
22		
21	BLACK LEGS #2	
20	BLACK BORDER #2	ALL
19	BLACK LEGS #2	ALL
18	BLACK BORDER #2	ALL
17		
16		
15		
14	BLOCKED BY A1-2 KAB WALL	ALL
13		
12	BLOCKED BY A1-2 KAB WALL	ALL
11		
10	A1-1 FLAGPOLE	1-1
9		
8		
7		
6	ELECTRIC CABLE X-OVER	ALL
5	1st ELECTRIC	ALL
4		
3		
2	BLACK LEGS #1	ALL
1	HOUSE MAIN DRAPE	
MC		
1	BLACK KNIFE as BORDER #1	ALL
Spot	SO TITLE SCREEN (3'x24' @ +29'-10")	
FC	FIRE CURTAIN	

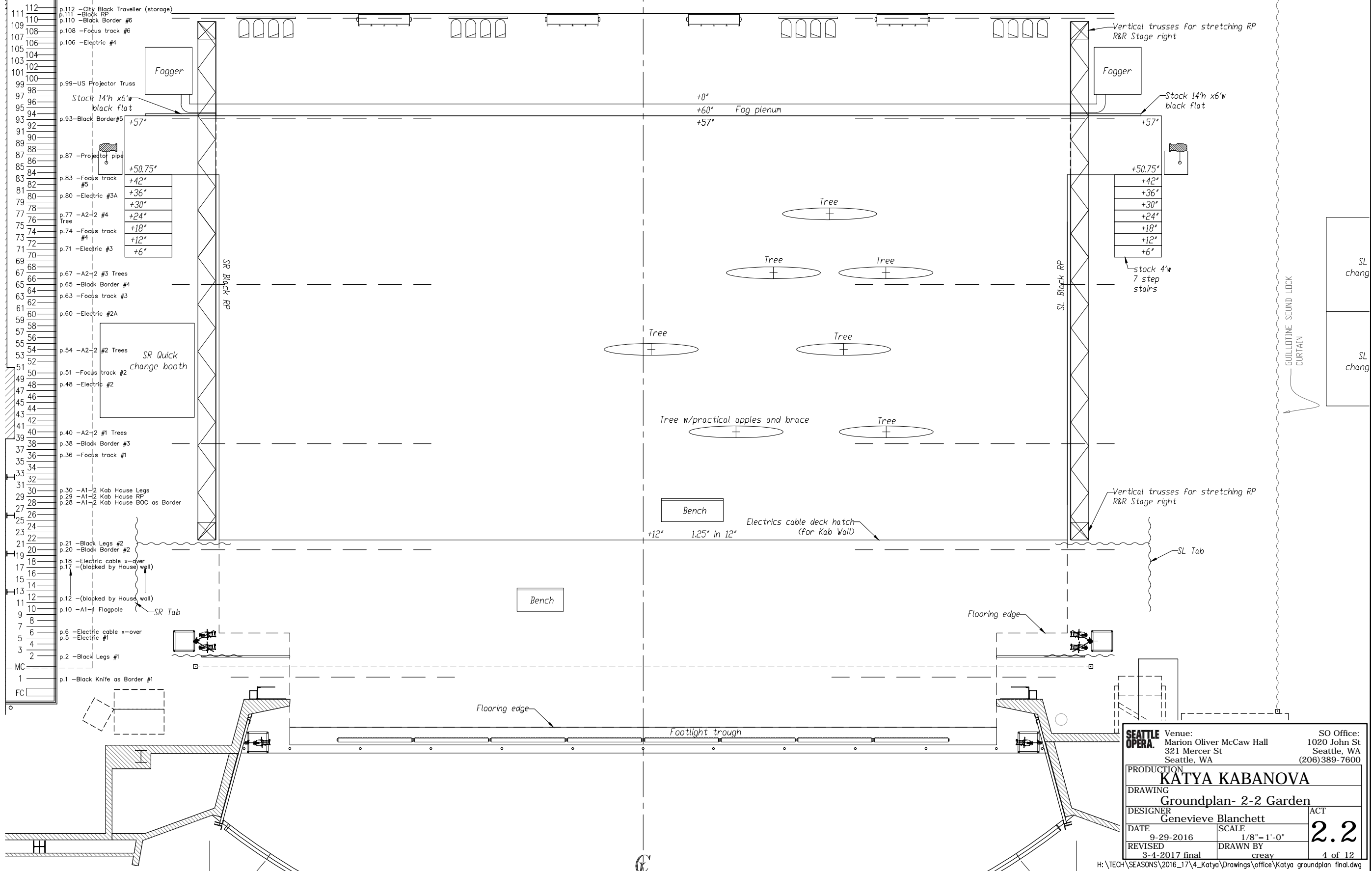


- GRID NOTES**
- 1) Grid Capacity = 200lb per Sq. Foot
  - 2) 30 @ point hoists = 750lb capacity ea.
- LINESSET NOTES**
- 1) All pipe lengths 80'-0"
  - 2) Arbor height = 12'-0"
  - 3) Capacity= 2000 lbs max. (907.18 kg)

<b>SEATTLE OPERA</b> Venue: Marion Oliver McCaw Hall 321 Mercer St Seattle, WA	SO Office: 1020 John St Seattle, WA (206)389-7600
DRAWING <b>Groundplan- 1-2/2-1 House</b>	
DESIGNER Genevieve Blanchett	ACT
DATE 9-29-2016	SCALE 1/8"=1'-0"
REVISID 3-4-2017 final	DRAWN BY creay
<b>1.2</b> 3 of 12	

# HANG CHART

PIPE	DESCRIPTION	ACT
112	CITY BLACK TRAVELER (Storage)	
111	BLACK RP	ALL
110	BLACK BORDER #6	ALL
109		
108	FOCUS TRACK #6	ALL
107		
106	4th ELECTRIC	ALL
105		
104		
103		
102		
101		
100		
99	US PROJECTOR TRUSS	1-2
98		
97		
96		
95		
94	BLACK BORDER #5	ALL
93		
92		
91		
90		
89		
88		
87	PROJECTOR PIPE	ALL
86		
85		
84	FOCUS TRACK #5	ALL
83		
82		
81	3A ELECTRIC	ALL
80		
79		
78	A2-2 #4 TREE	2-2
77		
76		
75	FOCUS TRACK #4	ALL
74		
73		
72		
71	3rd ELECTRIC	ALL
70		
69		
68	A2-2 #3 TREES	2-2
67		
66	BLACK BORDER #4	ALL
65		
64	FOCUS TRACK #3	ALL
63		
62	2A ELECTRIC	ALL
61		
60		
59		
58		
57	A2-2 #2 TREES	2-2
56		
55		
54		
53	FOCUS TRACK #2	ALL
52		
51		
50	2nd ELECTRIC	ALL
49		
48		
47		
46		
45		
44	A3-1 BIG TREE	3-1
43		
42		
41	A2-2 #1 TREES	2-2
40		
39	BLACK BORDER #3	ALL
38		
37	FOCUS TRACK #1	ALL
36		
35		
34		
33		
32		
31		
30	A1-2 KAB HOUSE LEGS	1-2
29	A1-2 KAB HOUSE RP	1-2
28	A1-2 KAB HOUSE BOC AS BORDER	1-2
27		
26		
25		
24		
23		
22		
21	BLACK LEGS #2	
20	BLACK BORDER #2	ALL
19	BLACK BORDER #2	ALL
18	BLACKED BY A1-2 KAB WALL	ALL
17		
16		
15		
14		
13	BLACKED BY A1-2 KAB WALL	ALL
12		
11	A1-1 FLAGPOLE	1-1
10		
9		
8		
7		
6	ELECTRIC CABLE X-OVER	ALL
5	1st ELECTRIC	ALL
4		
3	BLACK LEGS #1	ALL
2		
MC	HOUSE MAIN DRAPE	
1	BLACK KNIFE as BORDER #1	ALL
Spot	SO TITLE SCREEN (3'x24' @ +29'-10")	
FC	FIRE CURTAIN	

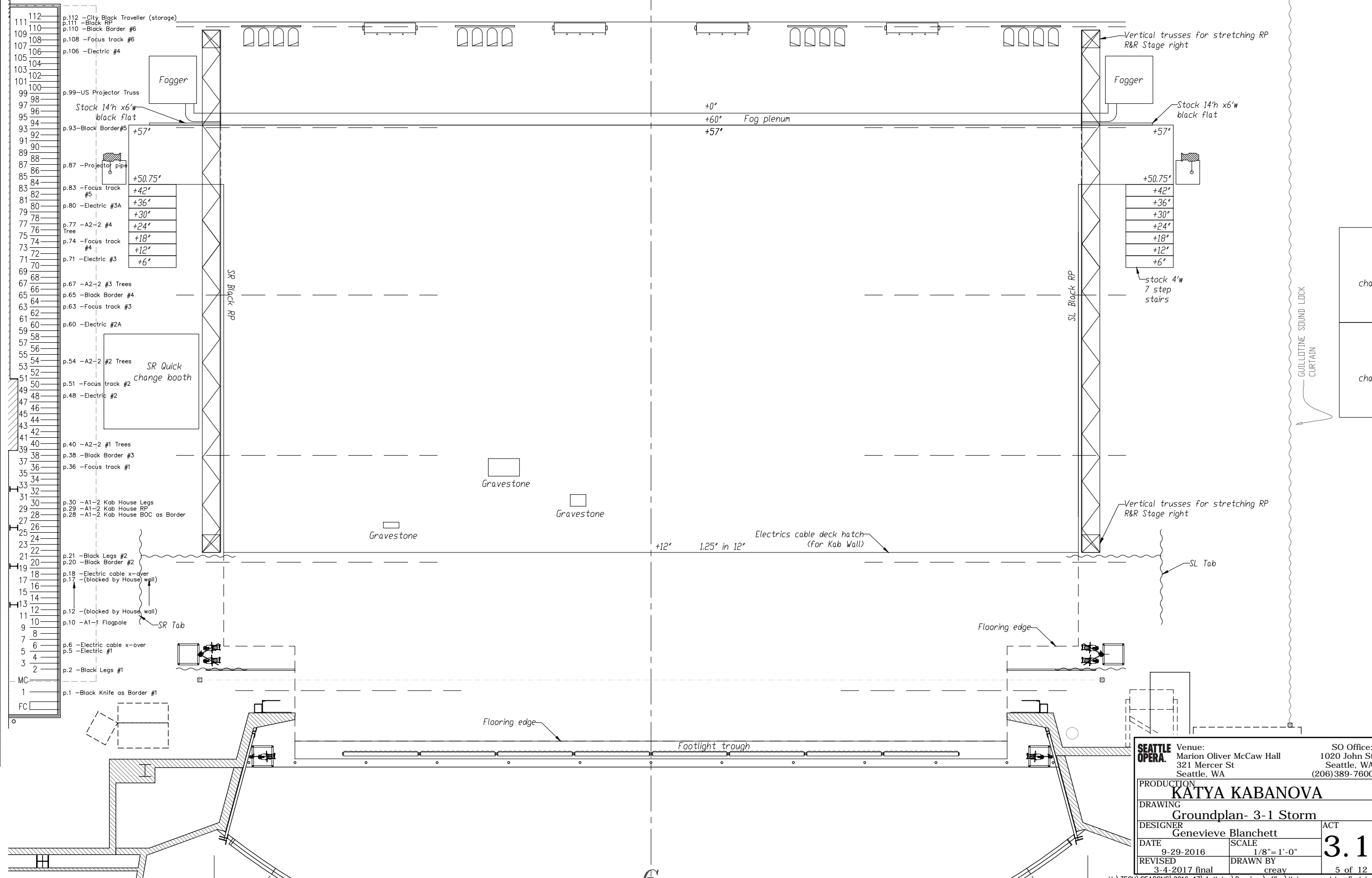


- GRID NOTES**
- 1) Grid Capacity = 200lb per Sq. Foot
  - 2) 30 @ point hoists = 750lb capacity ea.
- LINESSET NOTES**
- 1) All pipe lengths 80'-0"
  - 2) Arbor height = 12'-0"
  - 3) Capacity= 2000 lbs max. (907.18 kg)

<b>SEATTLE OPERA</b>	Venue: Marion Oliver McCaw Hall 321 Mercer St Seattle, WA	SO Office: 1020 John St Seattle, WA (206)389-7600
	PRODUCTION <b>KATYA KABANOVA</b>	
DRAWING <b>Groundplan- 2-2 Garden</b>		
DESIGNER Genevieve Blanchett	SCALE 1/8"=1'-0"	ACT <b>2.2</b>
DATE 9-29-2016	DRAWN BY creay	4 of 12
REVISED 3-4-2017 final		

# HANG CHART

PIPE	DESCRIPTION	ACT
112	CITY BLACK TRAVELER (Storage)	
111	BLACK RP	ALL
110	BLACK BORDER #6	ALL
109		
108	FOCUS TRACK #6	ALL
107		
106	4th ELECTRIC	ALL
105		
104		
103		
102		
101		
100		
99	US PROJECTOR TRUSS	1-2
98		
97		
96		
95		
94	BLACK BORDER #5	ALL
93		
92		
91		
90		
89		
88		
87	PROJECTOR PIPE	ALL
86		
85		
84	FOCUS TRACK #5	ALL
83		
82		
81	3A ELECTRIC	ALL
80		
79		
78	A2-2 #4 TREE	2-2
77		
76		
75	FOCUS TRACK #4	ALL
74		
73		
72		
71	3rd ELECTRIC	ALL
70		
69		
68	A2-2 #3 TREES	2-2
67		
66	BLACK BORDER #4	ALL
65		
64	FOCUS TRACK #3	ALL
63		
62	2A ELECTRIC	ALL
61		
60		
59		
58	A2-2 #2 TREES	2-2
57		
56		
55		
54		
53	FOCUS TRACK #2	ALL
52		
51		
50	2nd ELECTRIC	ALL
49		
48		
47		
46		
45		
44	A3-1 BIG TREE	3-1
43		
42		
41	A2-2 #1 TREES	2-2
40		
39	BLACK BORDER #3	ALL
38		
37	FOCUS TRACK #1	ALL
36		
35		
34		
33		
32		
31		
30	A1-2 KAB HOUSE LEGS	1-2
29	A1-2 KAB HOUSE RP	1-2
28	A1-2 KAB HOUSE BOC AS BORDER	1-2
27		
26		
25		
24		
23		
22		
21	BLACK LEGS #2	
20	BLACK BORDER #2	ALL
19		
18	BLACK LEGS #2	ALL
17	BLACK BORDER #2	ALL
16		
15		
14	BLOCKED BY A1-2 KAB WALL	ALL
13		
12	BLOCKED BY A1-2 KAB WALL	ALL
11		
10	A1-1 FLAGPOLE	1-1
9		
8		
7		
6	ELECTRIC CABLE X-OVER	ALL
5	1st ELECTRIC	ALL
4		
3	BLACK LEGS #1	ALL
2		
MC	HOUSE MAIN DRAPE	
1	BLACK KNIFE as BORDER #1	ALL
Spot	SO TITLE SCREEN (3'x24' @ +29'-10")	
FC	FIRE CURTAIN	

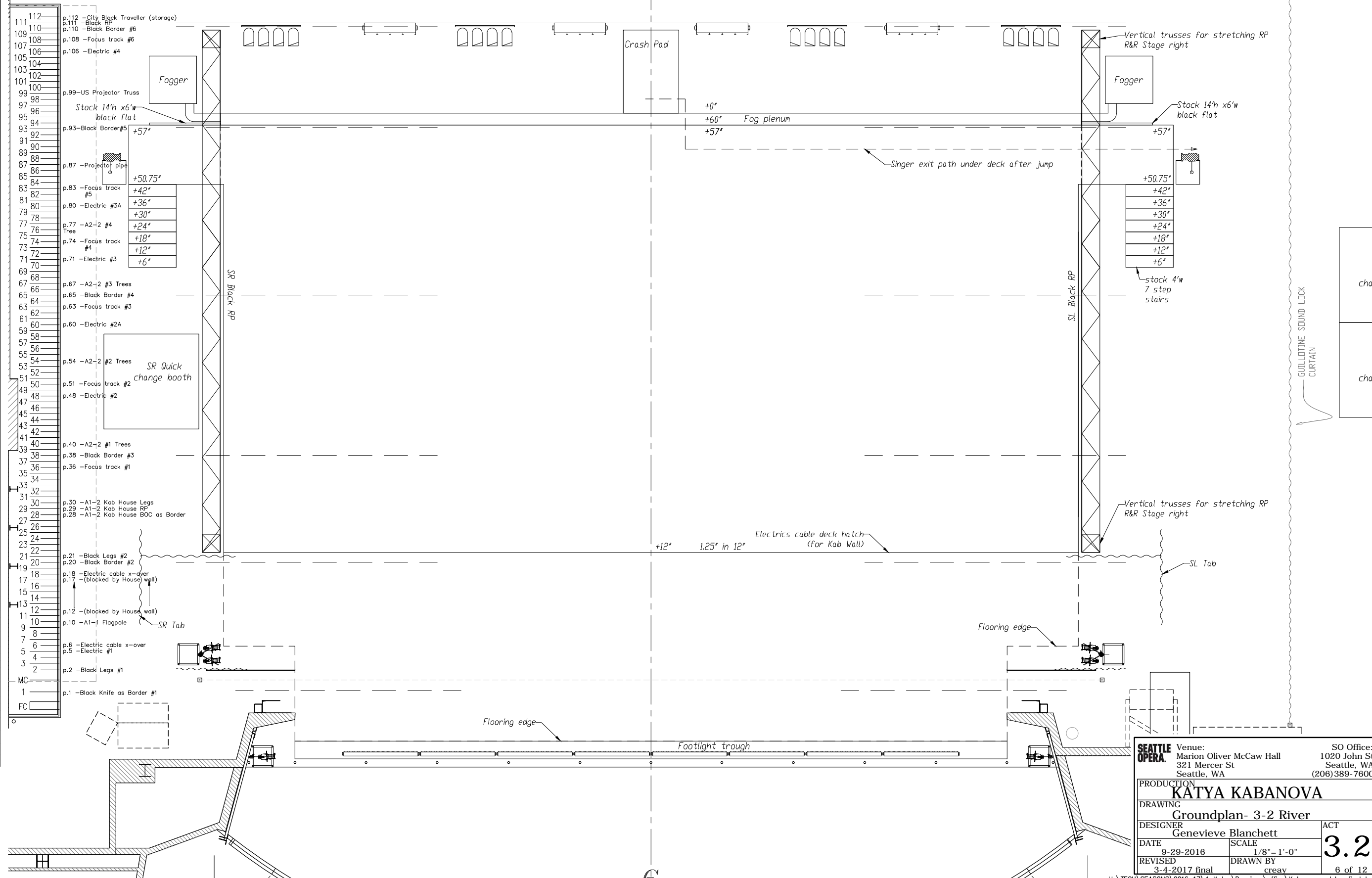


- GRID NOTES**
- 1) Grid Capacity = 200lb per Sq. Foot
  - 2) 30 @ point hoists = 750lb capacity ea.
- LINESSET NOTES**
- 1) All pipe lengths 80'-0"
  - 2) Arbor height = 12'-0"
  - 3) Capacity= 2000 lbs max. (907.18 kg)

<b>SEATTLE OPERA</b> Venue: Marion Oliver McCaw Hall 321 Mercer St Seattle, WA	SO Office: 1020 John St Seattle, WA (206)389-7600
DRAWING <b>Groundplan- 3-1 Storm</b>	
DESIGNER Genevieve Blanchett	ACT <b>3.1</b>
DATE 9-29-2016	SCALE 1/8"=1'-0"
REVISID 3-4-2017 final	DRAWN BY creay
5 of 12	

# HANG CHART

PIPE	DESCRIPTION	ACT
112	CITY BLACK TRAVELER (Storage)	
111	BLACK RP	ALL
110	BLACK BORDER #6	ALL
109		
108	FOCUS TRACK #6	ALL
107		
106	4th ELECTRIC	ALL
105		
104		
103		
102		
101		
100		
99	US PROJECTOR TRUSS	1-2
98		
97		
96		
95		
94	BLACK BORDER #5	ALL
93		
92		
91		
90		
89		
88	PROJECTOR PIPE	ALL
87		
86		
85		
84	FOCUS TRACK #5	ALL
83		
82		
81	3A ELECTRIC	ALL
80		
79		
78	A2-2 #4 TREE	2-2
77		
76		
75	FOCUS TRACK #4	ALL
74		
73		
72		
71	3rd ELECTRIC	ALL
70		
69		
68	A2-2 #3 TREES	2-2
67		
66	BLACK BORDER #4	ALL
65		
64	FOCUS TRACK #3	ALL
63		
62		
61	2A ELECTRIC	ALL
60		
59		
58		
57	A2-2 #2 TREES	2-2
56		
55		
54		
53		
52	FOCUS TRACK #2	ALL
51		
50		
49	2nd ELECTRIC	ALL
48		
47		
46		
45		
44	A3-1 BIG TREE	3-1
43		
42		
41	A2-2 #1 TREES	2-2
40		
39	BLACK BORDER #3	ALL
38		
37	FOCUS TRACK #1	ALL
36		
35		
34		
33		
32		
31		
30	A1-2 KAB HOUSE LEGS	1-2
29	A1-2 KAB HOUSE RP	1-2
28	A1-2 KAB HOUSE BOC AS BORDER	1-2
27		
26		
25		
24		
23		
22		
21	BLACK LEGS #2	ALL
20	BLACK BORDER #2	ALL
19		
18	BLOCKED BY A1-2 KAB WALL	ALL
17		
16		
15		
14		
13	BLOCKED BY A1-2 KAB WALL	ALL
12		
11	A1-1 FLAGPOLE	1-1
10		
9		
8		
7	ELECTRIC CABLE X-OVER	ALL
6	1st ELECTRIC	ALL
5		
4		
3	BLACK LEGS #1	ALL
2		
MC	HOUSE MAIN DRAPE	
1	BLACK KNIFE as BORDER #1	ALL
Spot	SO TITLE SCREEN (3'x24' @ +29'-10")	
FC	FIRE CURTAIN	

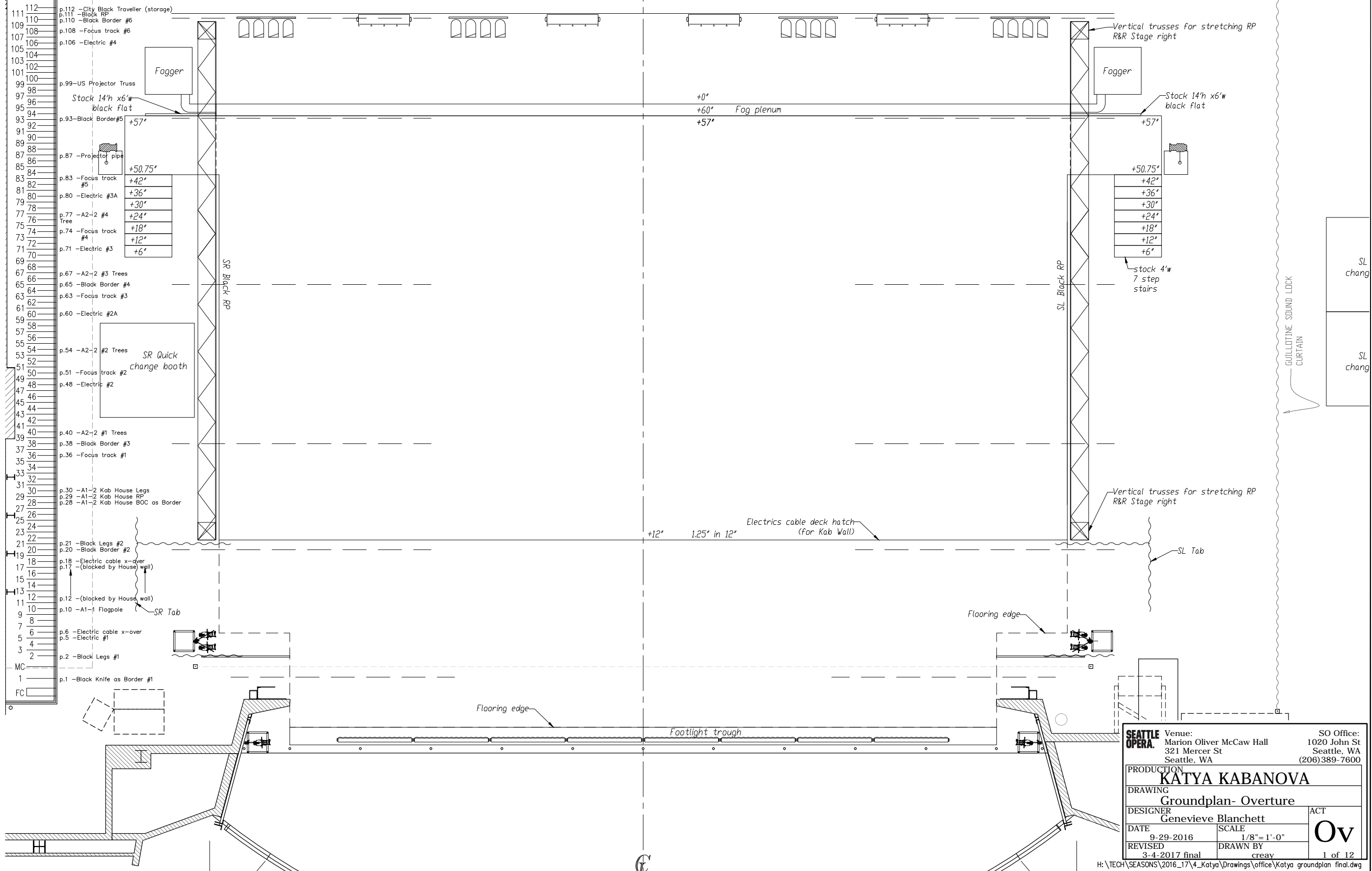


- GRID NOTES**
- 1) Grid Capacity = 200lb per Sq. Foot
  - 2) 30 @ point hoists = 750lb capacity ea.
- LINESSET NOTES**
- 1) All pipe lengths 80'-0"
  - 2) Arbor height = 12'-0"
  - 3) Capacity= 2000 lbs max. (907.18 kg)

<b>SEATTLE OPERA</b> Venue: Marion Oliver McCaw Hall 321 Mercer St Seattle, WA	SO Office: 1020 John St Seattle, WA (206)389-7600
DRAWING <b>Groundplan- 3-2 River</b>	
DESIGNER Genevieve Blanchett	ACT <b>3.2</b>
DATE 9-29-2016	SCALE 1/8"=1'-0"
REVISID 3-4-2017 final	DRAWN BY creay
6 of 12	

# HANG CHART

PIPE	DESCRIPTION	ACT
112	CITY BLACK TRAVELER (Storage)	
111	BLACK RP	ALL
110	BLACK BORDER #6	ALL
109		
108	FOCUS TRACK #6	ALL
107		
106	4th ELECTRIC	ALL
105		
104		
103		
102		
101		
100		
99	US PROJECTOR TRUSS	1-2
98		
97		
96		
95		
94	BLACK BORDER #5	ALL
93		
92		
91		
90		
89		
88		
87	PROJECTOR PIPE	ALL
86		
85		
84	FOCUS TRACK #5	ALL
83		
82		
81	3A ELECTRIC	ALL
80		
79		
78	A2-2 #4 TREE	2-2
77		
76		
75	FOCUS TRACK #4	ALL
74		
73		
72		
71	3rd ELECTRIC	ALL
70		
69		
68	A2-2 #3 TREES	2-2
67		
66	BLACK BORDER #4	ALL
65		
64	FOCUS TRACK #3	ALL
63		
62	2A ELECTRIC	ALL
61		
60		
59		
58	A2-2 #2 TREES	2-2
57		
56		
55		
54		
53	FOCUS TRACK #2	ALL
52		
51		
50	2nd ELECTRIC	ALL
49		
48		
47		
46		
45		
44	A3-1 BIG TREE	3-1
43		
42		
41	A2-2 #1 TREES	2-2
40		
39	BLACK BORDER #3	ALL
38		
37	FOCUS TRACK #1	ALL
36		
35		
34		
33		
32		
31		
30	A1-2 KAB HOUSE LEGS	1-2
29	A1-2 KAB HOUSE RP	1-2
28	A1-2 KAB HOUSE BOC AS BORDER	1-2
27		
26		
25		
24		
23		
22		
21	BLACK LEGS #2	ALL
20	BLACK BORDER #2	ALL
19		
18	BLOCKED BY A1-2 KAB WALL	ALL
17		
16		
15		
14		
13	BLOCKED BY A1-2 KAB WALL	ALL
12		
11	A1-1 FLAGPOLE	1-1
10		
9		
8		
7	ELECTRIC CABLE X-OVER	ALL
6	1st ELECTRIC	ALL
5		
4		
3	BLACK LEGS #1	ALL
2	HOUSE MAIN DRAPE	
1	BLACK KNIFE as BORDER #1	ALL
Spot	SO TITLE SCREEN (3'x24' @ +29'-10")	
FC	FIRE CURTAIN	



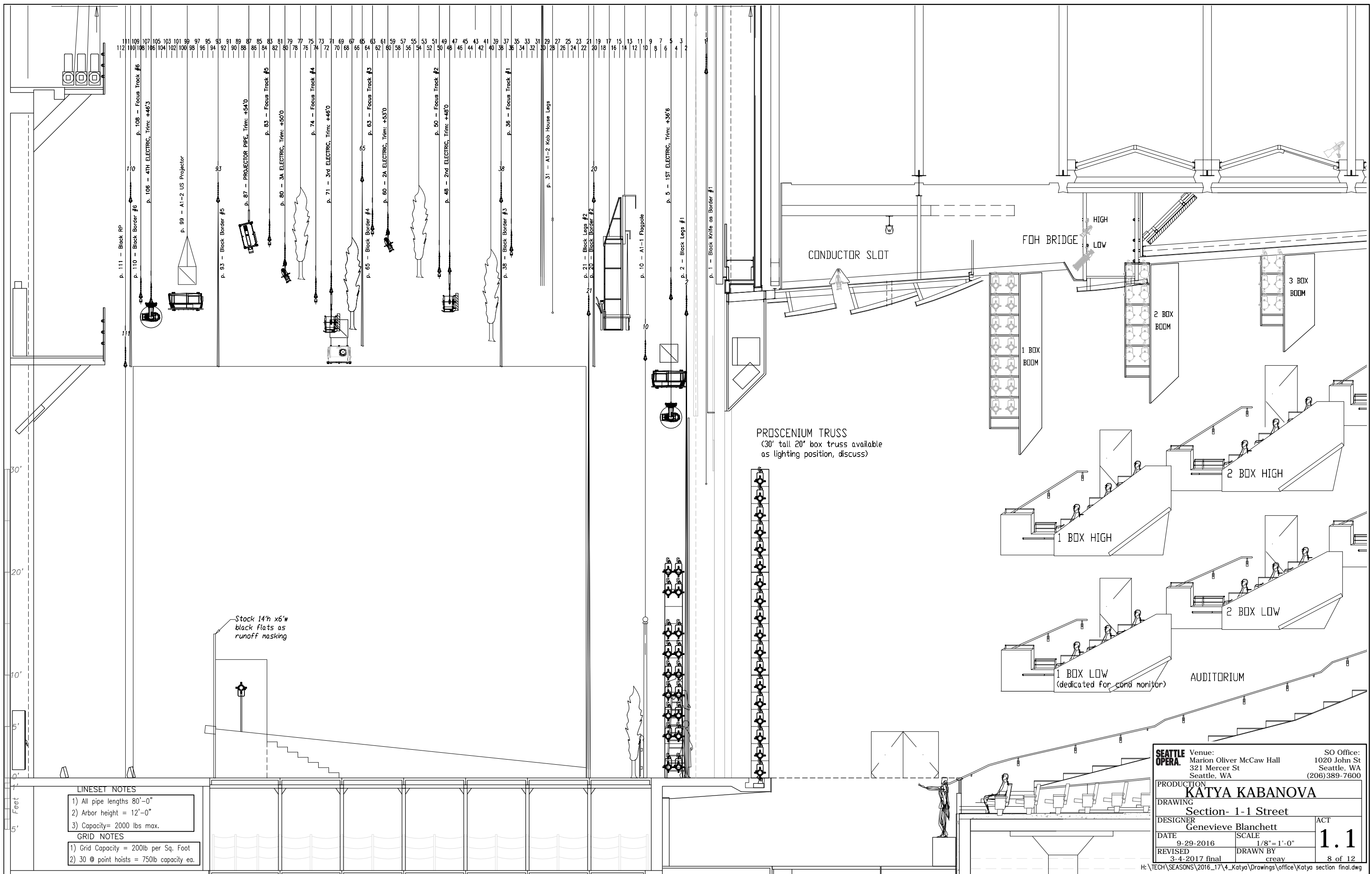
**GRID NOTES**

- 1) Grid Capacity = 200lb per Sq. Foot
- 2) 30 @ point hoists = 750lb capacity ea.

**LINESSET NOTES**

- 1) All pipe lengths 80'-0"
- 2) Arbor height = 12'-0"
- 3) Capacity= 2000 lbs max. (907.18 kg)

<b>SEATTLE OPERA</b> Venue: Marion Oliver McCaw Hall 1020 John St Seattle, WA (206)389-7600	SO Office: 1020 John St Seattle, WA (206)389-7600
	PRODUCTION <b>KATYA KABANOVA</b>
DRAWING <b>Groundplan- Overture</b>	ACT <b>Ov</b>
DESIGNER Genevieve Blanchett	SCALE 1/8" = 1'-0"
DATE 9-29-2016	DRAWN BY creay
REVISED 3-4-2017 final	1 of 12



- p. 111 - Black RP
- p. 110 - Black Border #6
- p. 108 - Focus Track #6
- p. 106 - 4TH ELECTRIC, Trim: +44'0"
- p. 99 - A1-2 US Projector
- p. 93 - Black Border #5
- p. 87 - PROJECTOR PIPE, Trim: +54'0"
- p. 83 - Focus Track #5
- p. 80 - 3A ELECTRIC, Trim: +50'0"
- p. 74 - Focus Track #4
- p. 71 - 3rd ELECTRIC, Trim: +46'0"
- p. 65 - Black Border #4
- p. 63 - Focus Track #3
- p. 60 - 2A ELECTRIC, Trim: +53'0"
- p. 50 - Focus Track #2
- p. 48 - 2nd ELECTRIC, Trim: +48'0"
- p. 38 - Black Border #3
- p. 31 - A1-2 Kab House Legs
- p. 21 - Black Legs #2
- p. 20 - Black Border #2
- p. 10 - A1-1 Flaggpole
- p. 5 - 1ST ELECTRIC, Trim: +36'6"
- p. 2 - Black Legs #1
- p. 1 - Black Knife as Border #1

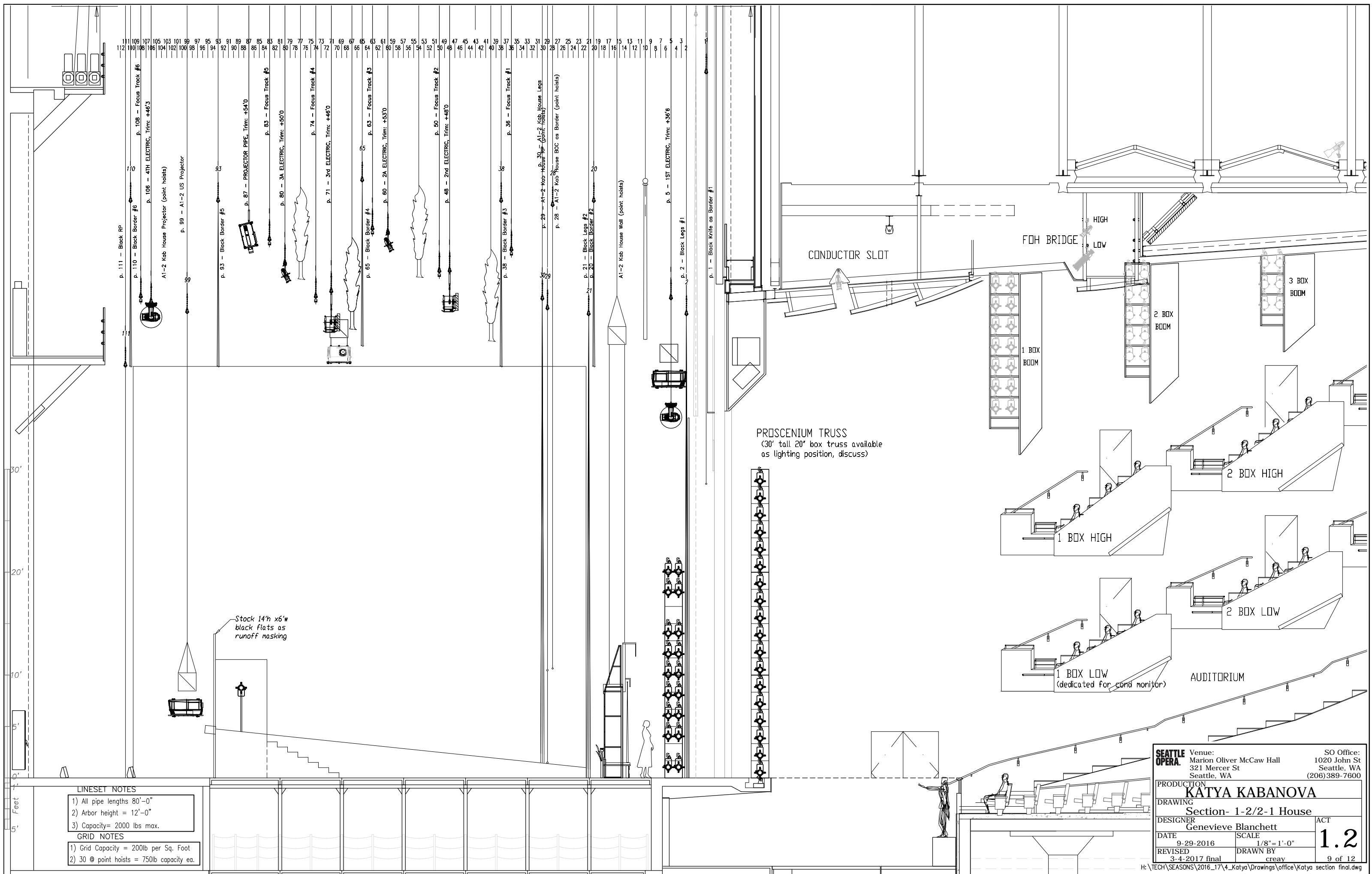
PROSCENIUM TRUSS  
 (30' tall 20' box truss available  
 as lighting position, discuss)

30'  
20'  
10'  
5'  
0'  
5' Feet

Stock 14" x 6" w  
black flats as  
runoff masking

- LINESET NOTES**
- 1) All pipe lengths 80'-0"
  - 2) Arbor height = 12'-0"
  - 3) Capacity= 2000 lbs max.
- GRID NOTES**
- 1) Grid Capacity = 200lb per Sq. Foot
  - 2) 30 @ point hoists = 750lb capacity ea.

<b>SEATTLE OPERA</b>	Venue: Marion Oliver McCaw Hall 321 Mercer St Seattle, WA	SO Office: 1020 John St Seattle, WA (206)389-7600
	PRODUCTION <b>KATYA KABANOVA</b>	
DRAWING	Section- 1-1 Street	
DESIGNER	Genevieve Blanchett	
DATE	9-29-2016	SCALE
REVISED	3-4-2017 final	DRAWN BY
	creay	ACT
		<b>1.1</b>
		8 of 12



111 109 107 105 103 101 99 97 95 93 91 89 87 85 83 81 79 77 75 73 71 69 67 65 63 61 59 57 55 53 51 49 47 45 43 41 39 37 35 33 31 29 27 25 23 21 19 17 15 13 11 9 7 5 3  
 112 110 108 106 104 102 100 98 96 94 92 90 88 86 84 82 80 78 76 74 72 70 68 66 64 62 60 58 56 54 52 50 48 46 44 42 40 38 36 34 32 30 28 26 24 22 20 18 16 14 12 10 8 6 4 2

p. 111 - Black RP  
 p. 110 - Black Border #6  
 p. 108 - Focus Track #6  
 p. 106 - 4TH ELECTRIC, Trim: +44'3"  
 A1-2 Kab House Projector (point hoists)  
 p. 99 - A1-2 US Projector  
 p. 93 - Black Border #5  
 p. 87 - PROJECTOR PIPE, Trim: +54'0"  
 p. 83 - Focus Track #5  
 p. 80 - 3A ELECTRIC, Trim: +50'0"  
 p. 74 - Focus Track #4  
 p. 71 - 3rd ELECTRIC, Trim: +46'0"  
 p. 65 - Black Border #4  
 p. 63 - Focus Track #3  
 p. 60 - 2A ELECTRIC, Trim: +53'0"  
 p. 50 - Focus Track #2  
 p. 48 - 2nd ELECTRIC, Trim: +48'0"  
 p. 38 - Black Border #3  
 p. 29 - A1-2 Kab House RP (point hoists)  
 p. 28 - A1-2 Kab House BCC as Border (point hoists)  
 p. 21 - Black Legs #2  
 p. 20 - Black Border #2  
 A1-2 Kab House Wall (point hoists)  
 p. 5 - 1ST ELECTRIC, Trim: +36'6"  
 p. 2 - Black Legs #1  
 p. 1 - Black Knife as Border #1

30'  
20'  
10'  
5'  
0'  
5'

Feet

**LINESET NOTES**

- 1) All pipe lengths 80'-0"
- 2) Arbor height = 12'-0"
- 3) Capacity= 2000 lbs max.

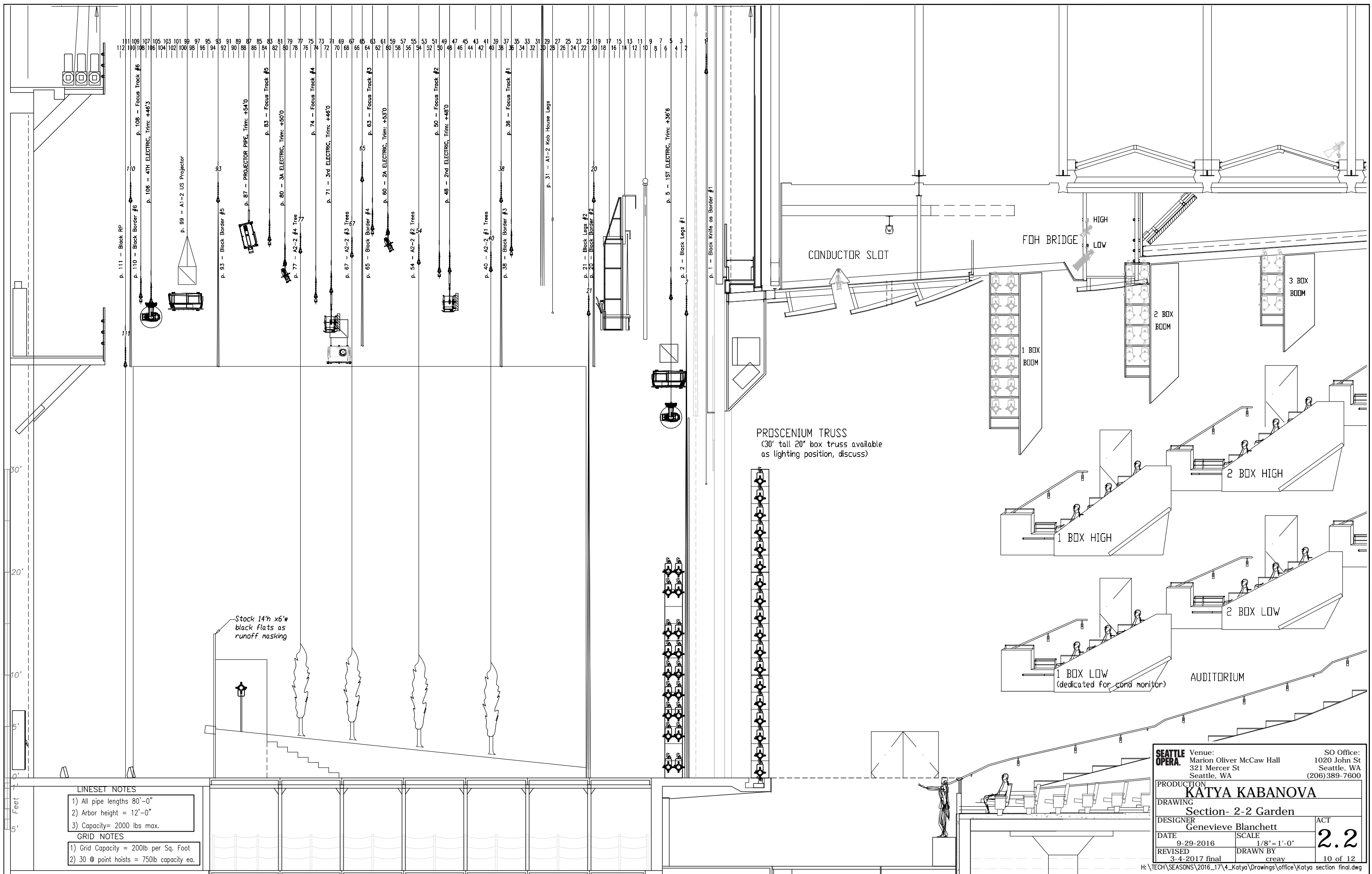
**GRID NOTES**

- 1) Grid Capacity = 200lb per Sq. Foot
- 2) 30 @ point hoists = 750lb capacity ea.

PROSCENIUM TRUSS  
 (30' tall 20' box truss available  
 as lighting position, discuss)

<b>SEATTLE OPERA</b>	Venue: Marion Oliver McCaw Hall 321 Mercer St Seattle, WA	SO Office: 1020 John St Seattle, WA (206)389-7600
	PRODUCTION <b>KATYA KABANOVA</b>	
DRAWING	Section- 1-2/2-1 House	
DESIGNER	Genevieve Blanchett	
DATE	9-29-2016	SCALE 1/8"=1'-0"
REVISED	3-4-2017 final	DRAWN BY creay
		ACT <b>1.2</b> 9 of 12

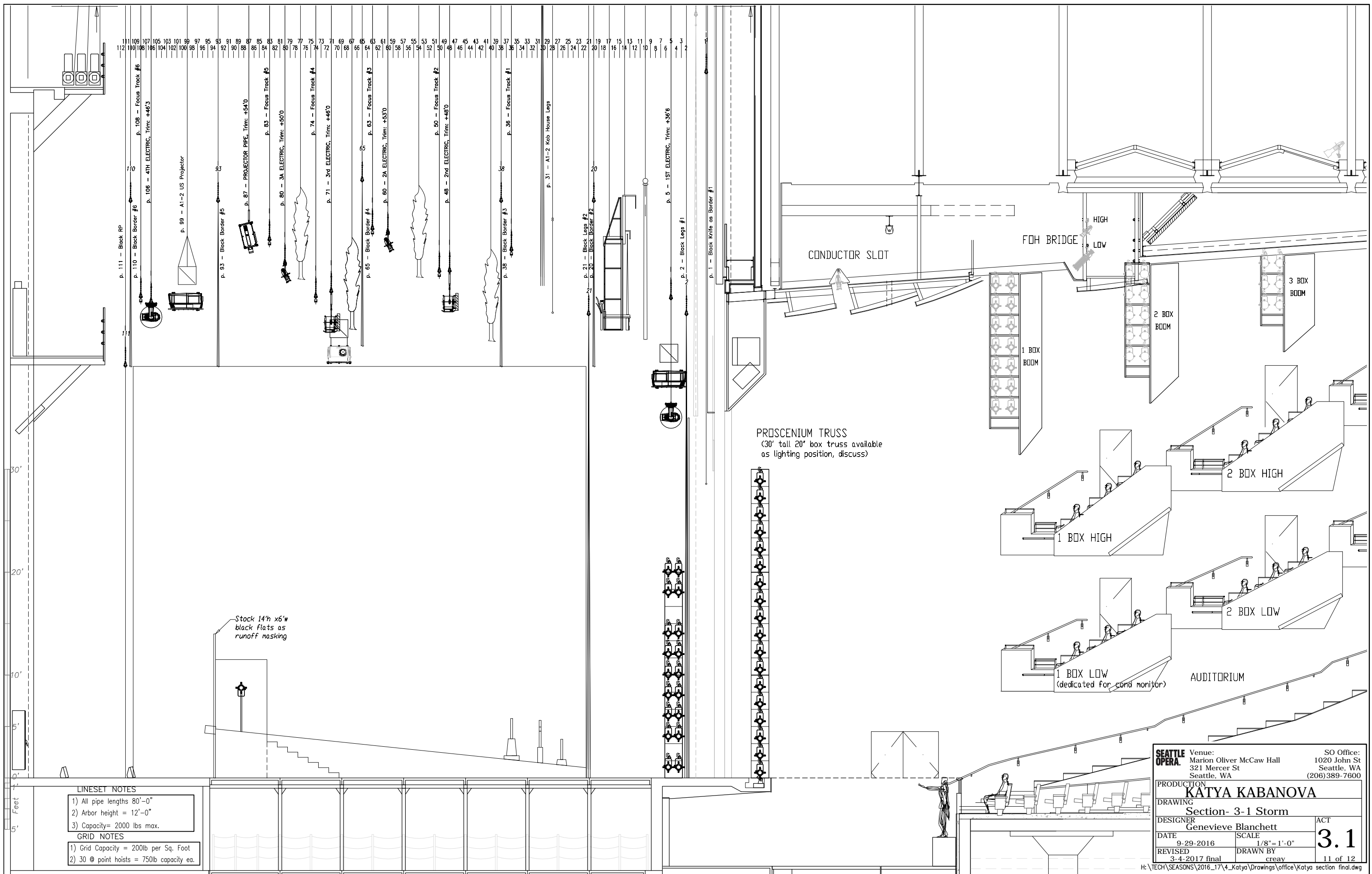




PROSCENIUM TRUSS  
 (30' tall 20' box truss available  
 as lighting position, discuss)

- LINESET NOTES**
- 1) All pipe lengths 80'-0"
  - 2) Arbor height = 12'-0"
  - 3) Capacity= 2000 lbs max.
- GRID NOTES**
- 1) Grid Capacity = 200lb per Sq. Foot
  - 2) 30 @ point hoists = 750lb capacity ea.

<b>SEATTLE OPERA</b>	Venue: Marion Oliver McCaw Hall 321 Mercer St Seattle, WA	SO Office: 1020 John St Seattle, WA (206)389-7600
	PRODUCTION <b>KATYA KABANOVA</b>	
DRAWING	Section- 2-2 Garden	
DESIGNER	Genevieve Blanchett	ACT
DATE	9-29-2016	SCALE 1/8"=1'-0"
REVISED	3-4-2017 final	DRAWN BY creay
		<b>2.2</b>
		10 of 12



111 109 107 105 103 101 99 97 95 93 91 89 87 85 83 81 79 77 75 73 71 69 67 65 63 61 59 57 55 53 51 49 47 45 43 41 39 37 35 33 31 29 27 25 23 21 19 17 15 13 11 9 7 5 3  
 112 110 108 106 104 102 100 98 96 94 92 90 88 86 84 82 80 78 76 74 72 70 68 66 64 62 60 58 56 54 52 50 48 46 44 42 40 38 36 34 32 30 28 26 24 22 20 18 16 14 12 10 8 6 4 2

p. 111 - Black RP  
 p. 110 - Black Border #6  
 p. 108 - Focus Track #6  
 p. 106 - 4TH ELECTRIC, Trim: +44'0"  
 p. 99 - A1-2 US Projector  
 p. 93 - Black Border #5  
 p. 87 - PROJECTOR PIPE, Trim: +54'0"  
 p. 83 - Focus Track #5  
 p. 80 - 3A ELECTRIC, Trim: +50'0"  
 p. 74 - Focus Track #4  
 p. 71 - 3rd ELECTRIC, Trim: +46'0"  
 p. 65 - Black Border #4  
 p. 63 - Focus Track #3  
 p. 60 - 2A ELECTRIC, Trim: +53'0"  
 p. 50 - Focus Track #2  
 p. 48 - 2nd ELECTRIC, Trim: +48'0"  
 p. 38 - Black Border #3  
 p. 31 - A1-2 Kab House Legs  
 p. 21 - Black Legs #2  
 p. 20 - Black Border #2  
 p. 5 - 1st ELECTRIC, Trim: +36'6"  
 p. 2 - Black Legs #1  
 p. 1 - Black Knife as Border #1

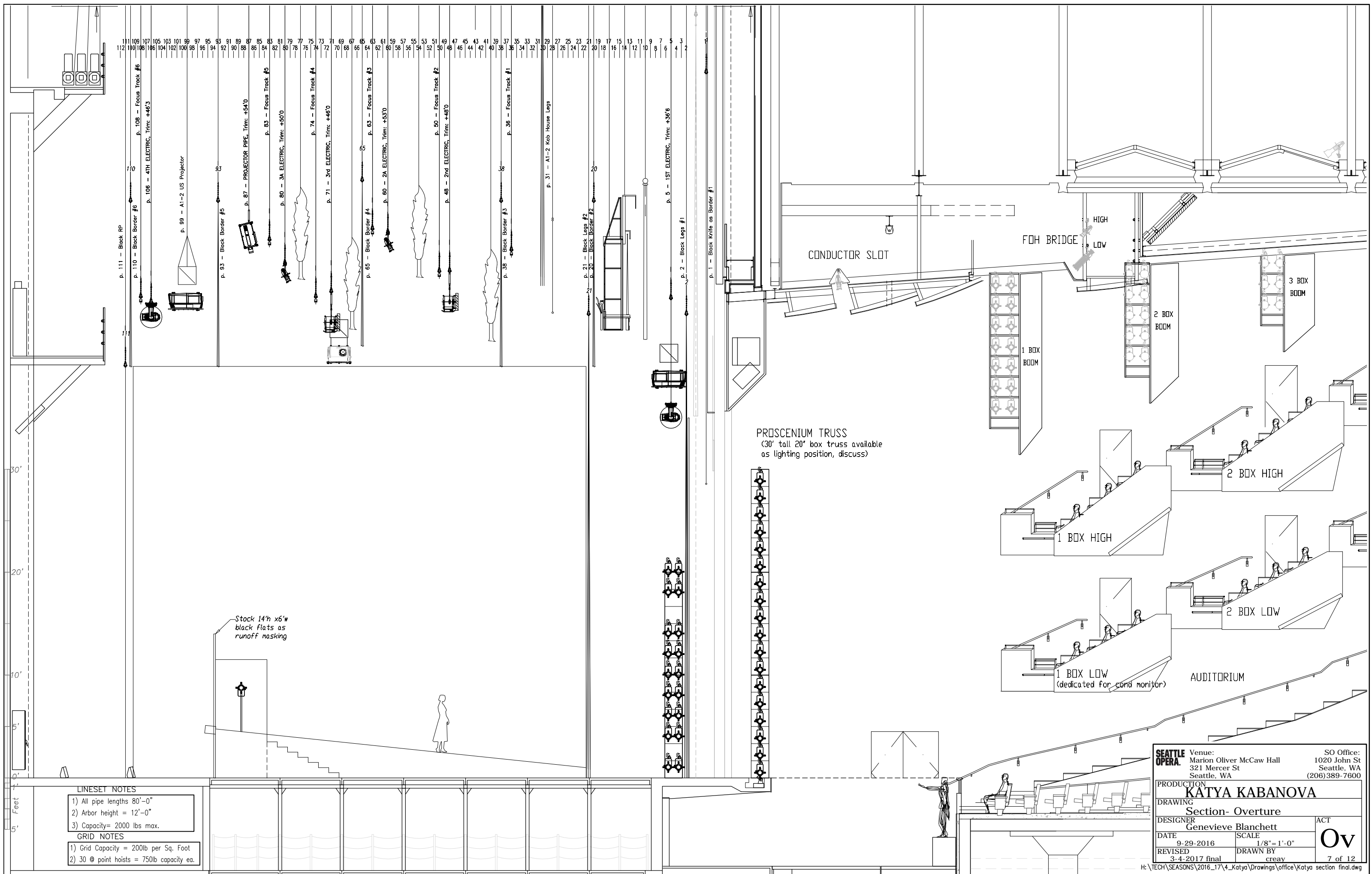
PROSCENIUM TRUSS  
 (30' tall 20' box truss available  
 as lighting position, discuss)

Stock 14" x 6" w  
 black flats as  
 runoff masking

LINESET NOTES  
 1) All pipe lengths 80'-0"  
 2) Arbor height = 12'-0"  
 3) Capacity= 2000 lbs max.

GRID NOTES  
 1) Grid Capacity = 200lb per Sq. Foot  
 2) 30 @ point hoists = 750lb capacity ea.

<b>SEATTLE OPERA</b>	Venue: Marion Oliver McCaw Hall 321 Mercer St Seattle, WA	SO Office: 1020 John St Seattle, WA (206)389-7600
	PRODUCTION <b>KATYA KABANOVA</b>	
DRAWING	Section- 3-1 Storm	
DESIGNER	Genevieve Blanchett	
DATE	9-29-2016	SCALE
REVISED	3-4-2017 final	DRAWN BY
		creay
		ACT
		<b>3.1</b>
		11 of 12



111 109 107 105 103 101 99 97 95 93 91 89 87 85 83 81 79 77 75 73 71 69 67 65 63 61 59 57 55 53 51 49 47 45 43 41 39 37 35 33 31 29 27 25 23 21 19 17 15 13 11 9 7 5 3  
 112 110 108 106 104 102 100 98 96 94 92 90 88 86 84 82 80 78 76 74 72 70 68 66 64 62 60 58 56 54 52 50 48 46 44 42 40 38 36 34 32 30 28 26 24 22 20 18 16 14 12 10 8 6 4 2

p. 111 - Black RP  
 p. 110 - Black Border #6  
 p. 108 - Focus Track #6  
 p. 106 - 4TH ELECTRIC, Trim: +44'0"  
 p. 99 - A1-2 US Projector  
 p. 93 - Black Border #5  
 p. 87 - PROJECTOR PIPE, Trim: +54'0"  
 p. 83 - Focus Track #5  
 p. 80 - 3A ELECTRIC, Trim: +50'0"  
 p. 74 - Focus Track #4  
 p. 71 - 3rd ELECTRIC, Trim: +46'0"  
 p. 65 - Black Border #4  
 p. 63 - Focus Track #3  
 p. 60 - 2A ELECTRIC, Trim: +53'0"  
 p. 50 - Focus Track #2  
 p. 48 - 2nd ELECTRIC, Trim: +48'0"  
 p. 38 - Black Border #3  
 p. 31 - A1-2 Kab House Legs  
 p. 21 - Black Legs #2  
 p. 20 - Black Border #2  
 p. 5 - 1st ELECTRIC, Trim: +36'6"  
 p. 2 - Black Legs #1  
 p. 1 - Black Knife as Border #1

30'  
20'  
10'  
5'  
0'  
5'

Feet

PROSCENIUM TRUSS  
 (30' tall 20' box truss available  
 as lighting position, discuss)

FOH BRIDGE  
 HIGH  
 LOW

CONDUCTOR SLOT

1 BOX BOOM

2 BOX BOOM

3 BOX BOOM

1 BOX HIGH

2 BOX HIGH

1 BOX LOW  
 (dedicated for cond monitor)

2 BOX LOW

AUDITORIUM

Stock 14" x 6" w  
 black flats as  
 runoff masking

**LINESET NOTES**

- 1) All pipe lengths 80'-0"
- 2) Arbor height = 12'-0"
- 3) Capacity= 2000 lbs max.

**GRID NOTES**

- 1) Grid Capacity = 200lb per Sq. Foot
- 2) 30 @ point hoists = 750lb capacity ea.

<b>SEATTLE OPERA</b>	Venue: Marion Oliver McCaw Hall 321 Mercer St Seattle, WA	SO Office: 1020 John St Seattle, WA (206)389-7600
	PRODUCTION <b>KATYA KABANOVA</b>	
DRAWING	Section- Overture	
DESIGNER	Genevieve Blanchett	
DATE	9-29-2016	SCALE 1/8"=1'-0"
REVISED	3-4-2017 final	DRAWN BY creay
		ACT <b>Ov</b> 7 of 12