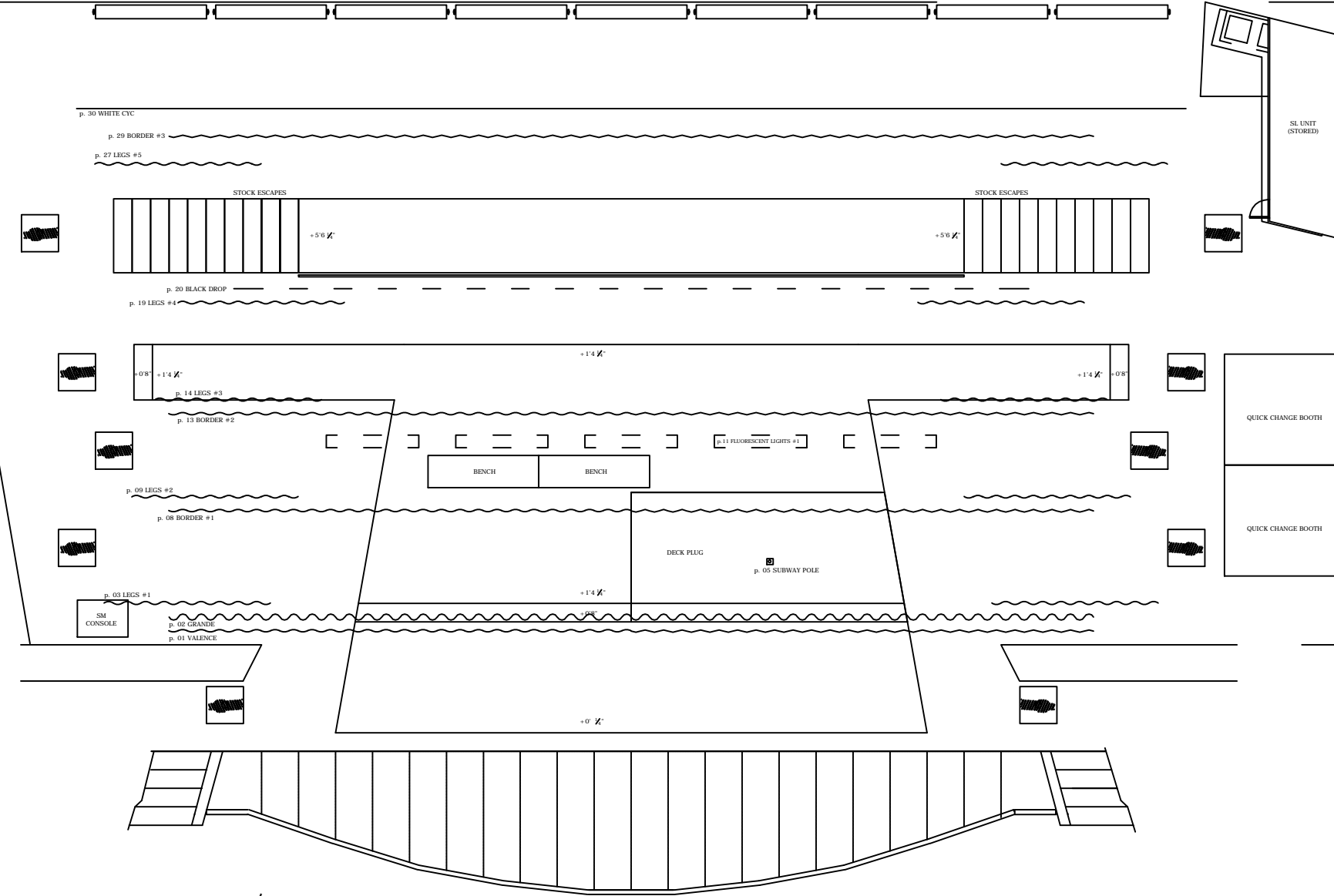
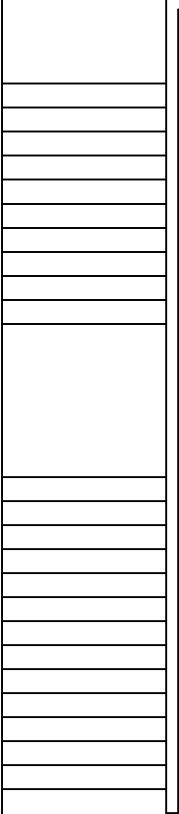


**FIRE EXIT LANE
MUST BE KEPT CLEAR**

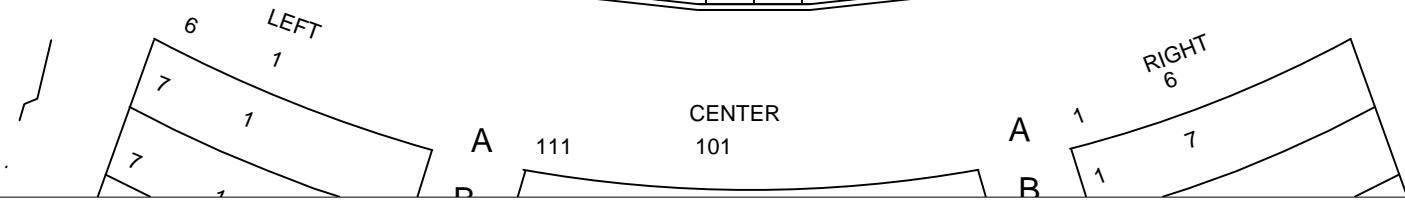


3	4x elec
1	House Cup (Not Used)
3	US Tray (Not Used)
3	White RP
2	Border #3
2	4th elec
2	Leg #5
2	Subway Sign #2
2	Subway Sign #1
2	Floor Lights #2
2	Crch (Not Used)
2	3a elec
2	Black Scrim
2	Black Drop
1	Leg #4
1	3rd elec
1	Flying Carpet
1	4th Tray
1	Crch (Not Used)
1	Leg #3
1	Border #2
1	Const Lights
1	Floor Lights #1
1	2nd elec
1	Leg #2
1	Border #1
1	Crch (Not Used)
1	Prod Screen (Not Used)
1	Subway Pole
1	1st elec
1	Leg #1
1	Grande
1	Valance

Linesets / Pinrail

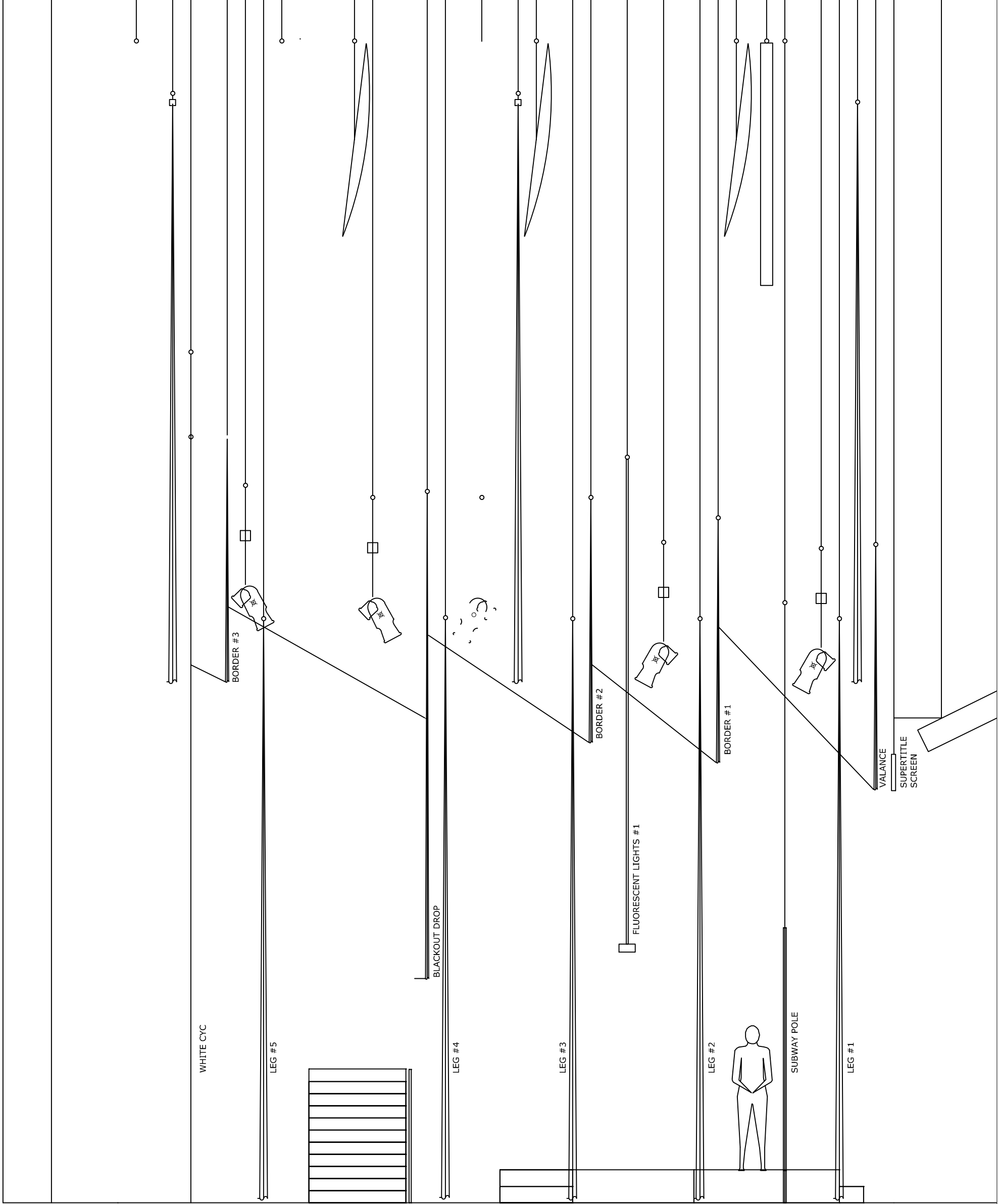



Open to below

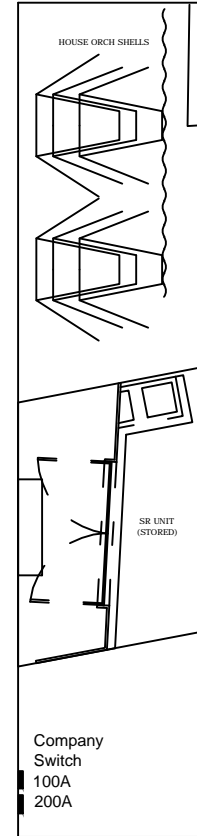


<p>SEATTLE OPERA SPRIGT JENKINS GENERAL DIRECTOR</p>	PRODUCTION	YAP 2008		ITEM#:	
	DRAWING	GROUNDPLAN - L'ENFANT Scene 1			
	DESIGNER	YOSHI TANOKURA			
	CREATED	2/21/2008	SCALE		1/8"=1'-0"
	PLOTTED	5/23/2012 1:56 PM	DRAWN BY		creay
				1 of 5	

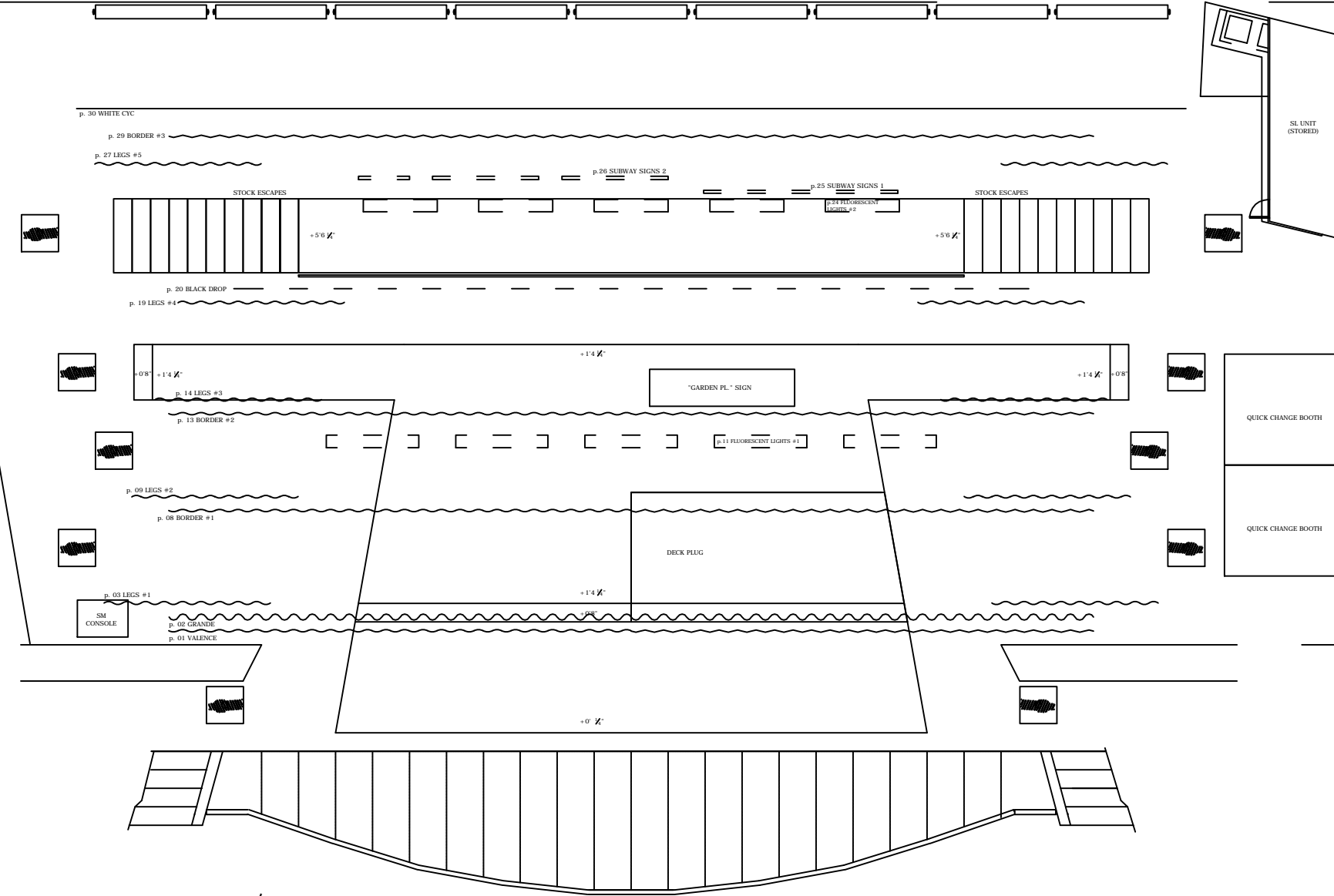
- 33 4a elec
- 32 House Cyc (Not Used)
- 31 US Trav (Not Used)
- 30 White RP
- 29 Border #3
- 28 4th elec
- 27 Leg #5
- 26 Subway Signs #2
- 25 Subway Signs #1
- 24 Fluor. Lights #2
- 23 Orch. (Not Used)
- 22 3a elec
- 21 Black Scrim
- 20 Black Drop
- 19 Legs #4
- 18 3rd elec
- 17 Drapes
- 16 MS Trav
- 15 Orch. (Not Used)
- 14 Legs #3
- 13 Border #2
- 12 Const. Lights
- 11 Fluor. Lights #1
- 10 2nd elec
- 9 Legs #2
- 8 Border #1
- 7 Orch. (Not Used)
- 6 Proj. Screen (Not Used)
- 5 Subway Pole
- 4 1st elec
- 3 Legs #1
- 2 Grande
- 1 Valance



 SEATTLE OPERA <small>SPEIGHT JENKINS GENERAL DIRECTOR</small>	PRODUCTION YAP 2008		ITEM#: 1 of 5
	DRAWING CL SECTION - L'ENFANT Scene 1		
	DESIGNER YOSHI TANOKURA		
	CREATED 2/21/2008	SCALE 1/4"=1'-0"	
PLOTTED 5/23/2012 2:04 PM	DRAWN BY creay		

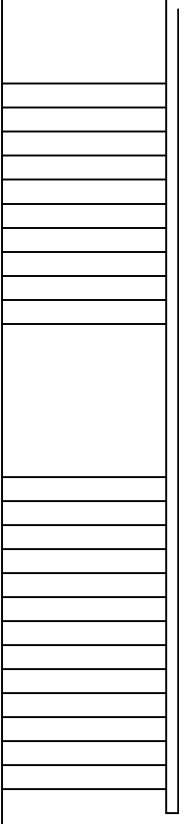


**FIRE EXIT LANE
MUST BE KEPT CLEAR**

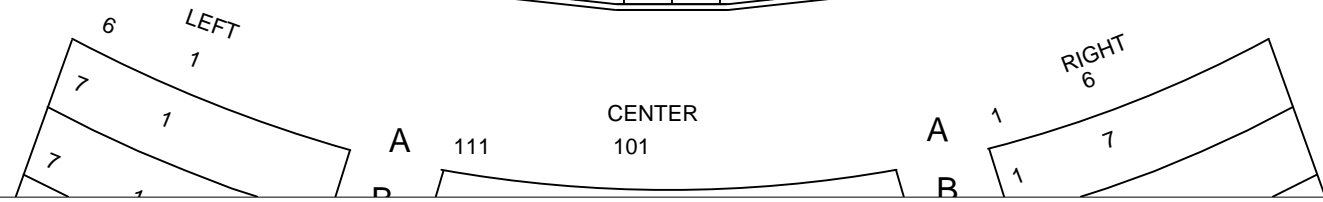


34	4th elec
35	House Cpl. (Not Used)
36	US Tray (Not Used)
37	White RP
38	Border #3
39	4th elec
40	Leg #5
41	Subway Sign #2
42	Subway Sign #1
43	Floor Lights #2
44	Orch (Not Used)
45	3a elec
46	Black Scrim
47	Black Drop
48	Leg #4
49	3rd elec
50	Flying Chapel
51	4th Tray
52	Orch (Not Used)
53	Leg #3
54	Border #2
55	Const Lights
56	Floor Lights #1
57	2nd elec
58	Leg #2
59	Border #1
60	Orch (Not Used)
61	Prod Scrim (Not Used)
62	Subway Pole
63	1st elec
64	Leg #1
65	Grande
66	Valance

Linesets / Pinrail

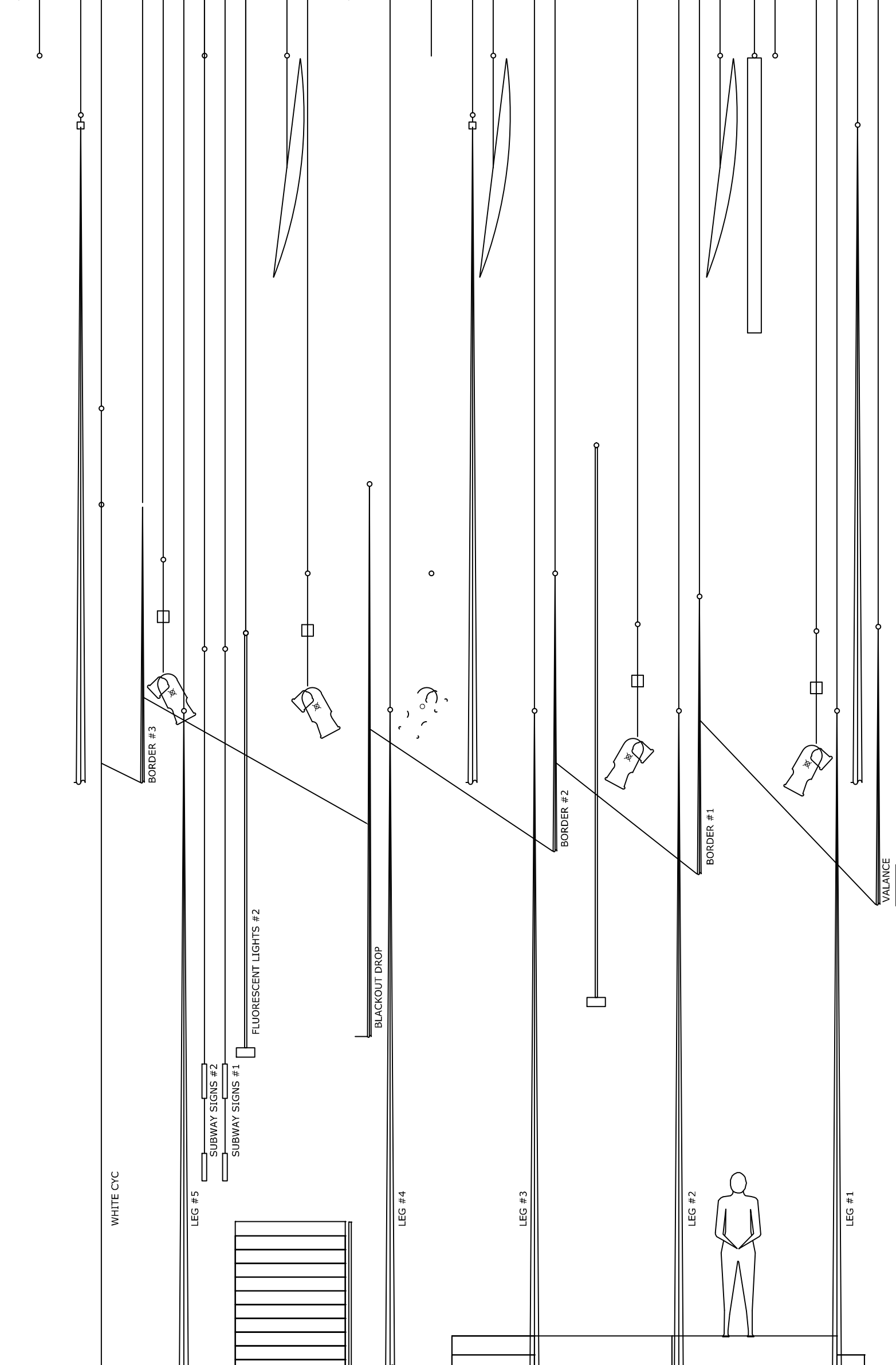


Open to below




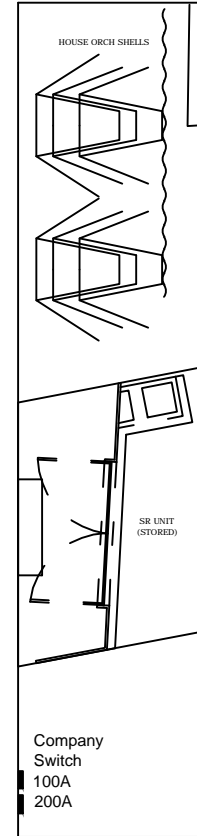
<p>SEATTLE OPERA SPIRIT JENKINS GENERAL DIRECTOR</p>	PRODUCTION	YAP 2008		ITEM#: 2 of 5	
	DRAWING	GROUNDPLAN - L'ENFANT Scene 2			
	DESIGNER	YOSHI TANOKURA			
	CREATED	2/21/2008	SCALE		1/8"=1'-0"
	PLOTTED	5/23/2012 1:57 PM	DRAWN BY		creay

- 33 4a elec
- 32 House Cyc (Not Used)
- 31 US Trav (Not Used)
- 30 White RP
- 29 Border #3
- 28 4th elec
- 27 Leg #5
- 26 Subway Signs #2
- 25 Subway Signs #1
- 24 Fluor. Lights #2
- 23 Orch. (Not Used)
- 22 3a elec
- 21 Black Scrim
- 20 Black Drop
- 19 Legs #4
- 18 3rd elec
- 17 Drapes
- 16 MS Trav Flying Paintings
- 15 Orch. (Not Used)
- 14 Legs #3
- 13 Border #2
- 12 Const. Lights
- 11 Fluor. Lights #1
- 10 2nd elec
- 9 Legs #2
- 8 Border #1
- 7 Orch. (Not Used)
- 6 Proj. Screen (Not Used)
- 5 Subway Pole
- 4 1st elec
- 3 Legs #1
- 2 Grande
- 1 Valance



VALANCE
SUPERTITLE
SCREEN

 SEATTLE OPERA <small>SPEIGHT JENKINS GENERAL DIRECTOR</small>	PRODUCTION YAP 2008		ITEM#: 2 of 5
	DRAWING CL SECTION - L'ENFANT Scene 2		
	DESIGNER YOSHI TANOKURA		
	CREATED 2/21/2008	SCALE 1/4"=1'-0"	
PLOTTED 5/23/2012 2:04 PM	DRAWN BY creay		



**FIRE EXIT LANE
MUST BE KEPT CLEAR**

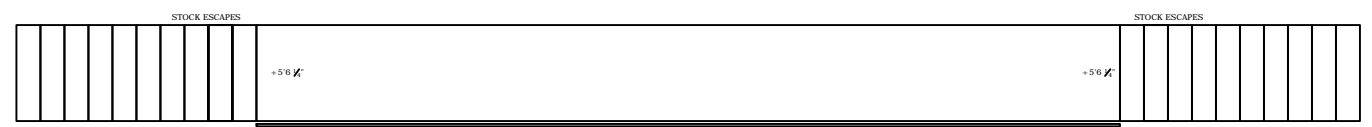
Company
Switch
100A
200A

Fire Ext.

p. 30 WHITE CYC

p. 29 BORDER #3

p. 27 LEGS #5



p. 20 BLACK DROP

p. 19 LEGS #4

p. 16 MS TRAVELLER

p. 14 LEGS #3

p. 13 BORDER #2

p. 09 LEGS #2

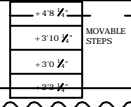
p. 08 BORDER #1

p. 03 LEGS #1

SM CONSOLE

p. 02 GRANDE

p. 01 VALENCE



+4'8\"/>

+3'10\"/>

+3'0\"/>

+2'3\"/>

+1'4\"/>

+0'\"/>

+0'\"/>

+0'\"/>

+0'\"/>

+0'\"/>

+0'\"/>

+0'\"/>

+0'\"/>

+0'\"/>

+0'\"/>

+0'\"/>

+0'\"/>

+0'\"/>

+0'\"/>

+0'\"/>

+0'\"/>

+0'\"/>

+0'\"/>

+0'\"/>

+0'\"/>

+0'\"/>

+0'\"/>

+0'\"/>

+0'\"/>

+0'\"/>

+0'\"/>

+0'\"/>

+0'\"/>

+0'\"/>

+0'\"/>

+0'\"/>

DECK PLUG

DECK PLUGS (STORED)

QUICK CHANGE BOOTH

BED (STORED)

SL UNIT (STORED)

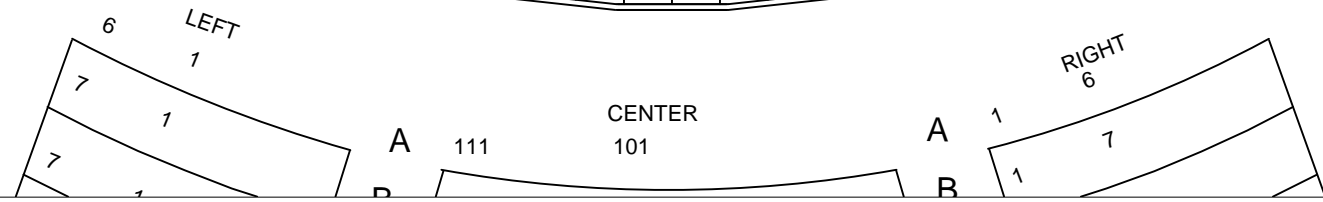
QUICK CHANGE BOOTH

QUICK CHANGE BOOTH

3	4th elec
1	House Cpl (Not Used)
3	US Tray (Not Used)
3	White RP
2	Border #3
2	4th elec
2	Leg #5
2	Subway Sign #2
2	Subway Sign #1
2	Floor Lights #2
2	Orch (Not Used)
2	3a elec
2	Black Scrim
2	Black Drop
1	Leg #4
1	3rd elec
1	Flying Carpet
1	4th Tray
1	Orch (Not Used)
1	Leg #3
1	Border #2
1	Const Lights
1	Floor Lights #1
1	2nd elec
1	Leg #2
1	Border #1
1	Orch (Not Used)
1	Prod Scrim (Not Used)
1	Subway Pole
1	1st elec
1	Leg #1
1	Grande
1	Valence

Linesets / Pinrail

Open to below



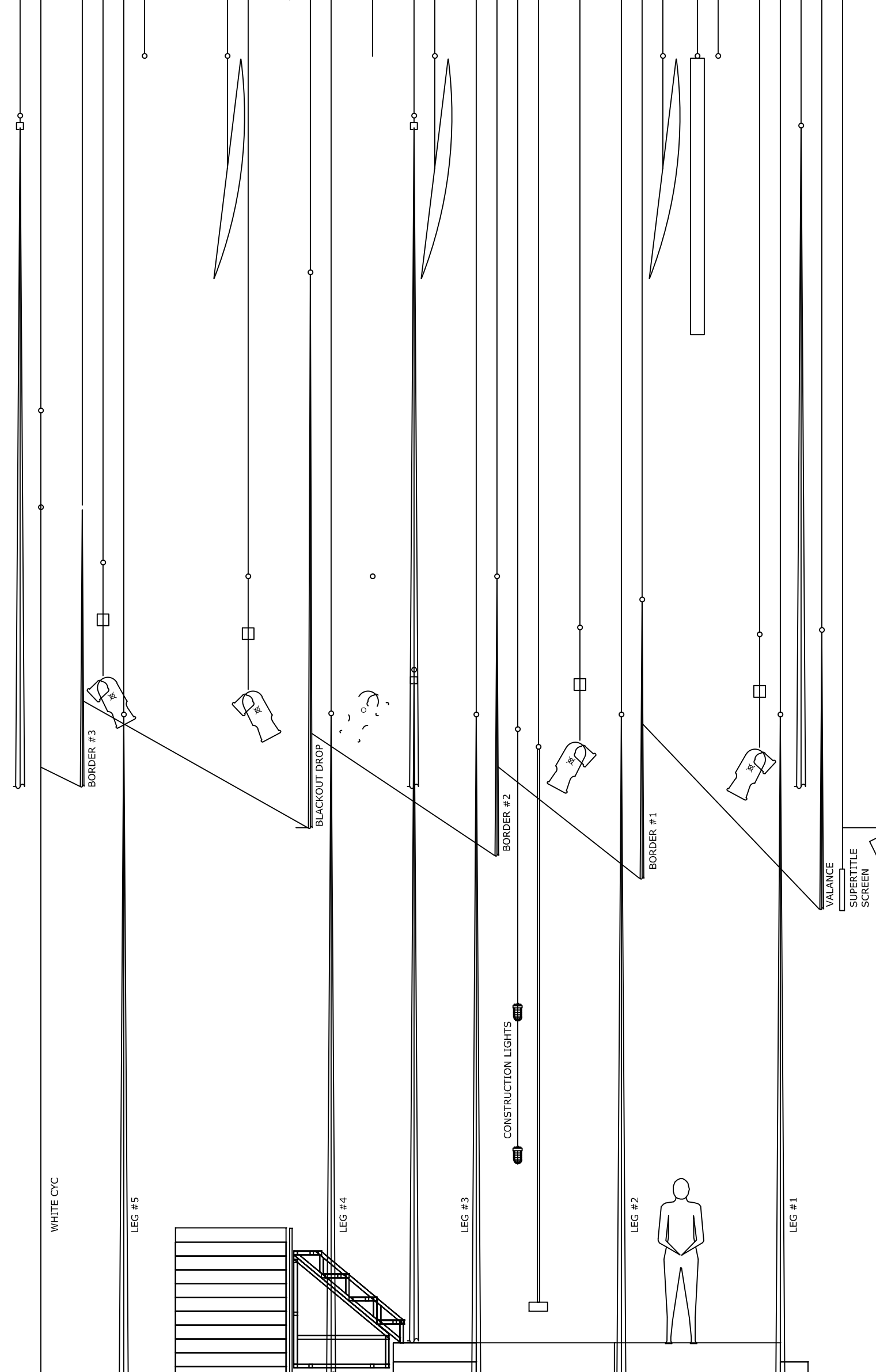
SEATTLE OPERA SCENIC STUDIOS
ROBERT SCHAUB, TECHNICAL DIRECTOR


MICHAEL MOORE, SCENIC STUDIO MANAGER
KITTY KAVANAUGH, MASTER SCENIC ARTIST

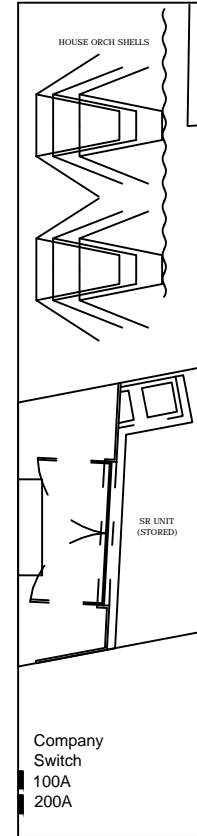
(425) 255-2588

	PRODUCTION	YAP 2008	
	DRAWING	GROUNDPLAN - L'ENFANT Scene 3	
	DESIGNER	YOSHI TANOKURA	
	CREATED	2/21/2008	SCALE
PLOTTED	5/23/2012 1:57 PM	DRAWN BY	creay
			3 of 5

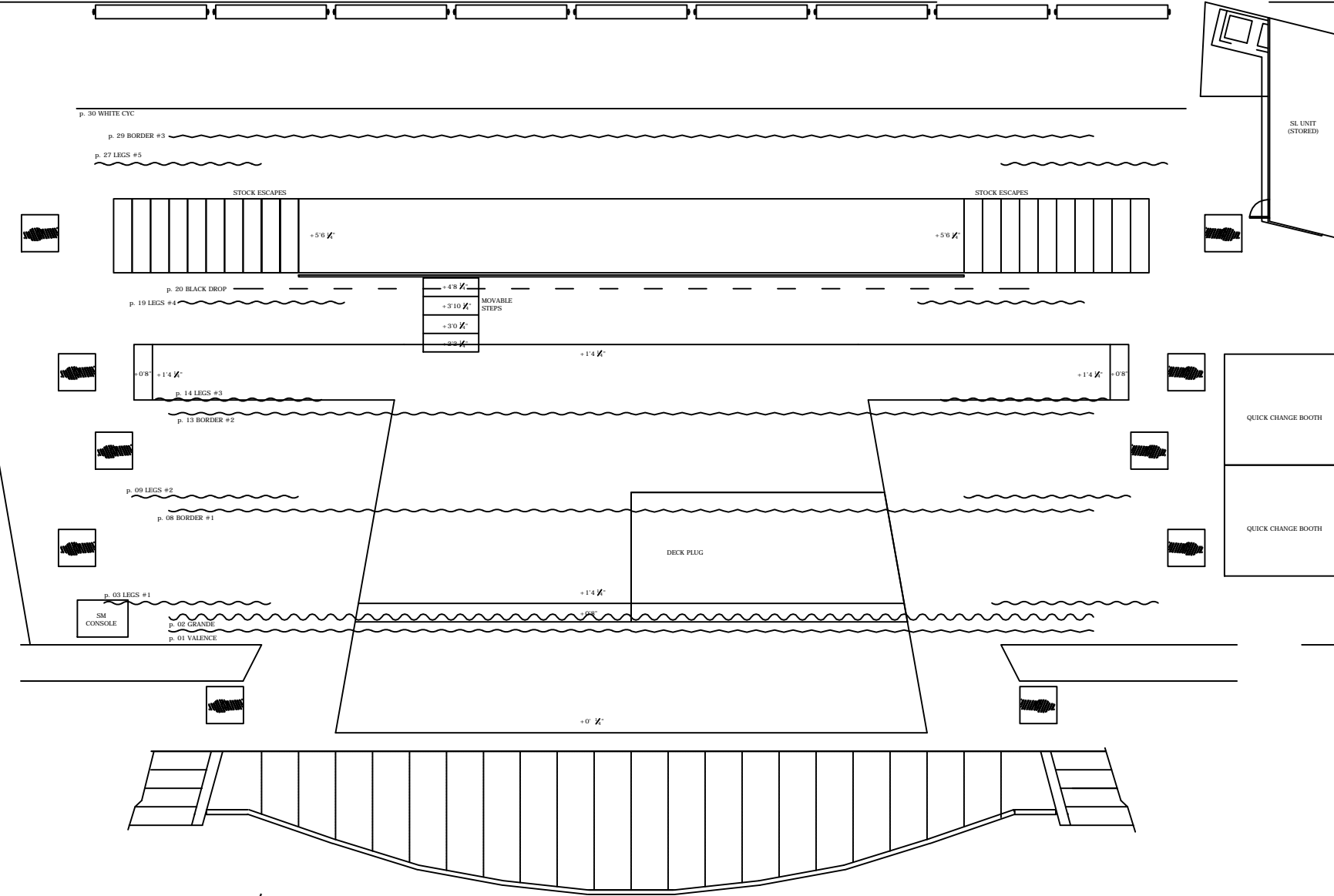
- 33 4a elec
- 32 House Cyc (Not Used)
- 31 US Trav (Not Used)
- 30 White RP
- 29 Border #3
- 28 4th elec
- 27 Leg #5
- 26 Subway Signs #2
- 25 Subway Signs #1
- 24 Fluor. Lights #2
- 23 Orch. (Not Used)
- 22 3a elec
- 21 Black Scrim
- 20 Black Drop
- 19 Legs #4
- 18 3rd elec
- 17 Drapes
- 16 MS Trav
- 15 Orch. (Not Used)
- 14 Legs #3
- 13 Border #2
- 12 Const. Lights
- 11 Fluor. Lights #1
- 10 2nd elec
- 9 Legs #2
- 8 Border #1
- 7 Orch. (Not Used)
- 6 Proj. Screen (Not Used)
- 5 Subway Pole
- 4 1st elec
- 3 Legs #1
- 2 Grande
- 1 Valance



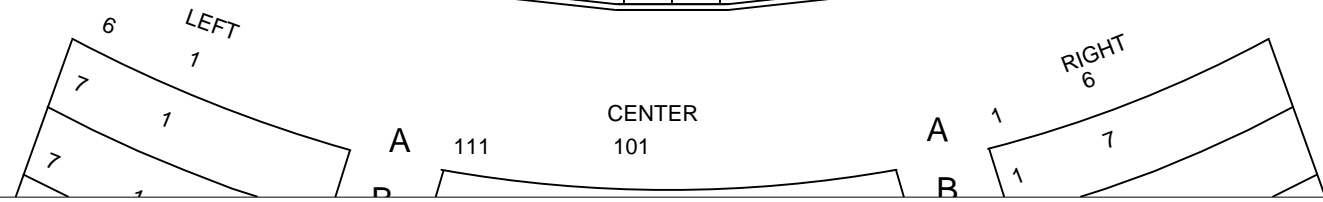
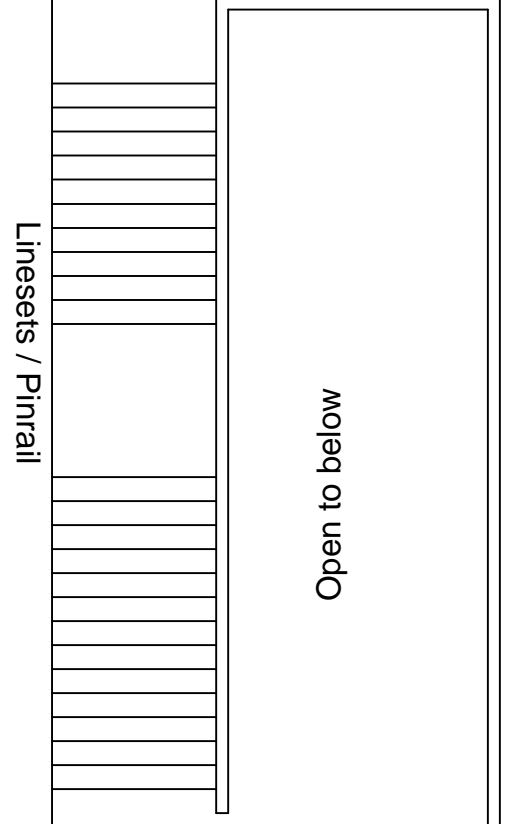
 SEATTLE OPERA <small>SPEIGHT JENKINS GENERAL DIRECTOR</small>	PRODUCTION YAP 2008		ITEM#: 3 of 5
	DRAWING CL SECTION - L'ENFANT Scene 3		
	DESIGNER YOSHI TANOKURA		
	CREATED 2/21/2008	SCALE 1/4"=1'-0"	
PLOTTED 5/23/2012 2:05 PM	DRAWN BY creay		



**FIRE EXIT LANE
MUST BE KEPT CLEAR**

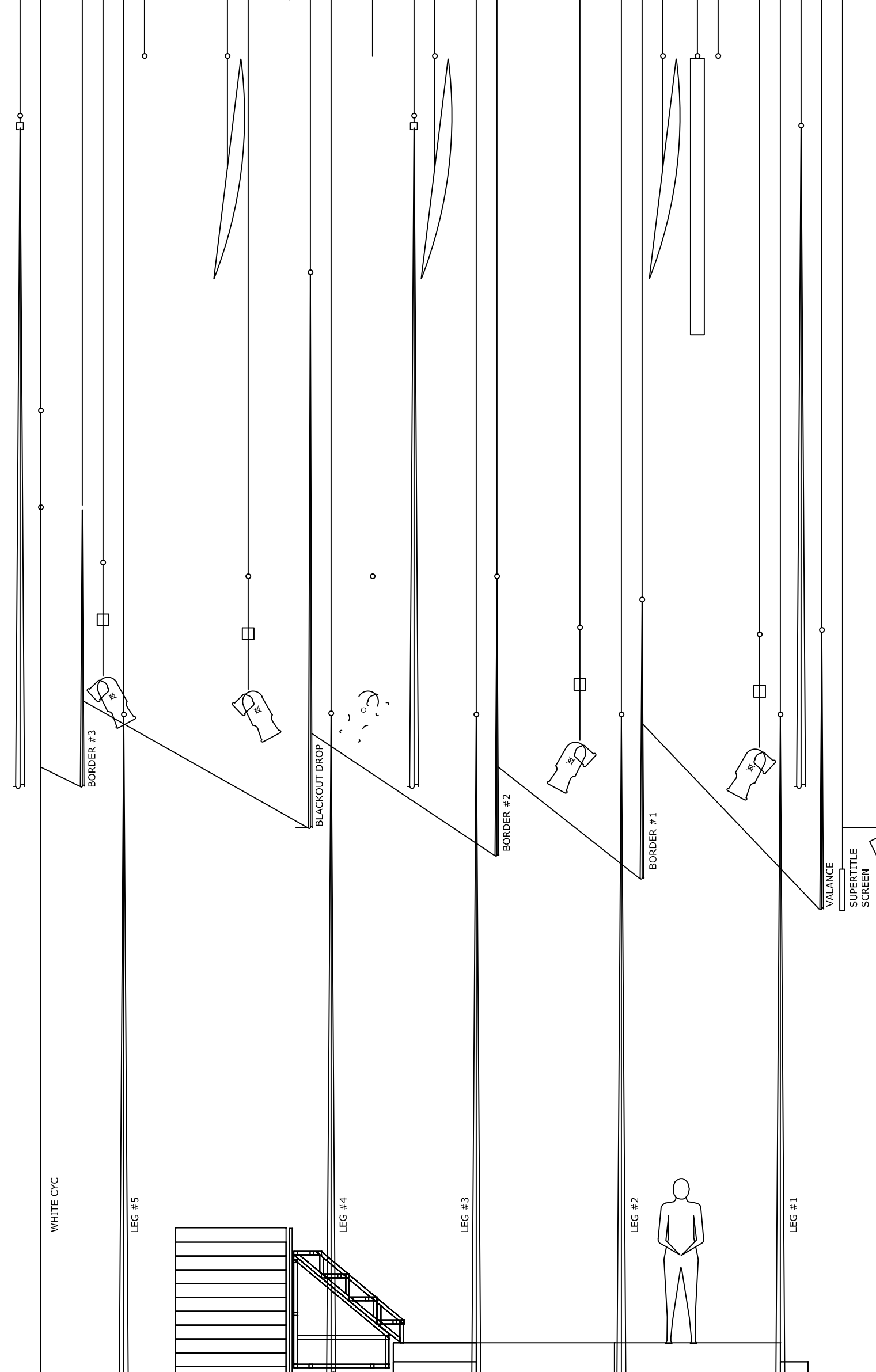



3	4th elec
1	House Cpl. (Not Used)
3	US Tray (Not Used)
3	White RP
2	Border #3
2	4th elec
2	Leg #5
2	Subway Sign #2
2	Subway Sign #1
2	Floor Lights #2
2	Orch (Not Used)
2	3a elec
2	Black Scrim
2	Black Drop
1	Leg #4
1	3rd elec
1	Flying Carpet
1	4th Tray
1	Orch (Not Used)
1	Leg #3
1	Border #2
1	Const Lights
1	Floor Lights #1
1	2nd elec
1	Leg #2
1	Border #1
1	Orch (Not Used)
1	Prod Scrim (Not Used)
1	Subway Pole
1	1st elec
1	Leg #1
1	Grande
1	Valance



<p>SEATTLE OPERA SPRIGT JENKINS GENERAL DIRECTOR</p>	PRODUCTION	YAP 2008		ITEM#:	
	DRAWING	GROUNDPLAN - L'ENFANT Scene 4			
	DESIGNER	YOSHI TANOKURA			
	CREATED	2/21/2008	SCALE		1/8"=1'-0"
	PLOTTED	5/23/2012 1:58 PM	DRAWN BY		creay
4 of 5					

- 33 4a elec
- 32 House Cyc (Not Used)
- 31 US Trav (Not Used)
- 30 White RP
- 29 Border #3
- 28 4th elec
- 27 Leg #5
- 26 Subway Signs #2
- 25 Subway Signs #1
- 24 Fluor. Lights #2
- 23 Orch. (Not Used)
- 22 3a elec
- 21 Black Scrim
- 20 Black Drop
- 19 Legs #4
- 18 3rd elec
- 17 Drapes
- 16 MS Trav Flying Paintings
- 15 Orch. (Not Used)
- 14 Legs #3
- 13 Border #2
- 12 Const. Lights
- 11 Fluor. Lights #1
- 10 2nd elec
- 9 Legs #2
- 8 Border #1
- 7 Orch. (Not Used)
- 6 Proj. Screen (Not Used)
- 5 Subway Pole
- 4 1st elec
- 3 Legs #1
- 2 Grande
- 1 Valance



 <p>SEATTLE OPERA SPEIGHT JENKINS GENERAL DIRECTOR</p>	<p>PRODUCTION YAP 2008</p>	<p>ITEM#:</p>
	<p>DRAWING CL SECTION - L'ENFANT Scene 4</p>	
	<p>DESIGNER YOSHI TANOKURA</p>	
	<p>CREATED 2/21/2008 SCALE 1/4"=1'-0"</p>	
<p>PLOTTED 5/23/2012 2:05 PM DRAWN BY creay</p>	<p>4 of 5</p>	