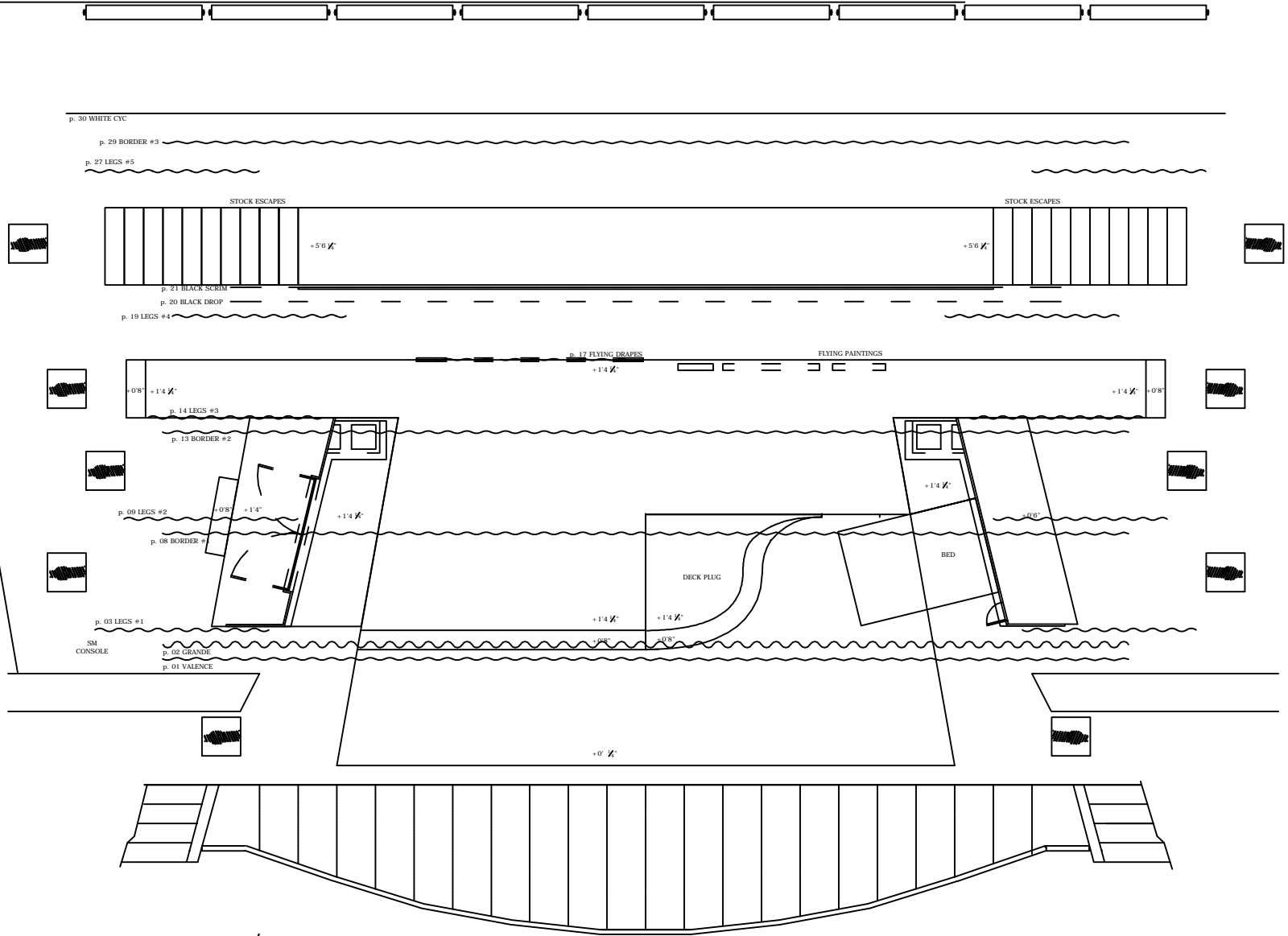


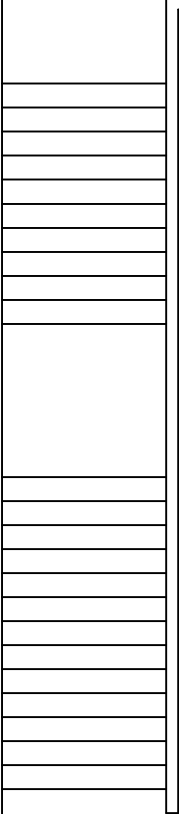
Company Switch
100A
200A

**FIRE EXIT LANE
MUST BE KEPT CLEAR**

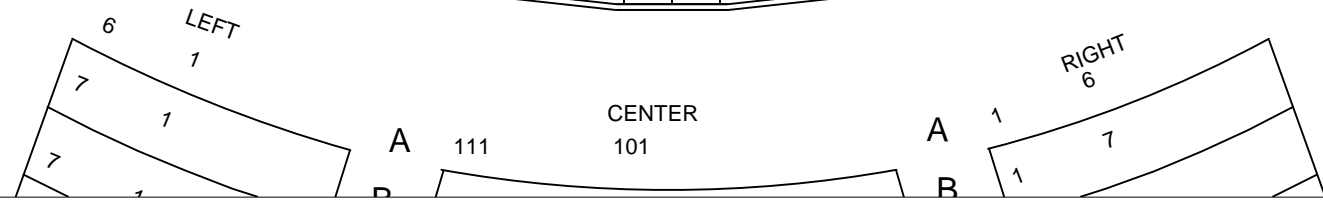



34	4th elec
33	House Cpl (Not Used)
32	US Tray (Not Used)
31	White RP
30	Border #3
29	4th elec
28	Leg #5
27	Subway Sign #2
26	Subway Sign #1
25	Floor Lights #2
24	Orch (Not Used)
23	3a elec
22	Black Scrim
21	Black Drop
20	Leg #4
19	3rd elec
18	Flying Drapes
17	4th Tray
16	Orch (Not Used)
15	Leg #3
14	Border #2
13	Conet Lights
12	Floor Lights #1
11	2nd elec
10	Leg #2
9	Border #1
8	Orch (Not Used)
7	Prog Screen (Not Used)
6	Subway Pole
5	1st elec
4	Leg #1
3	Grande
2	Valance

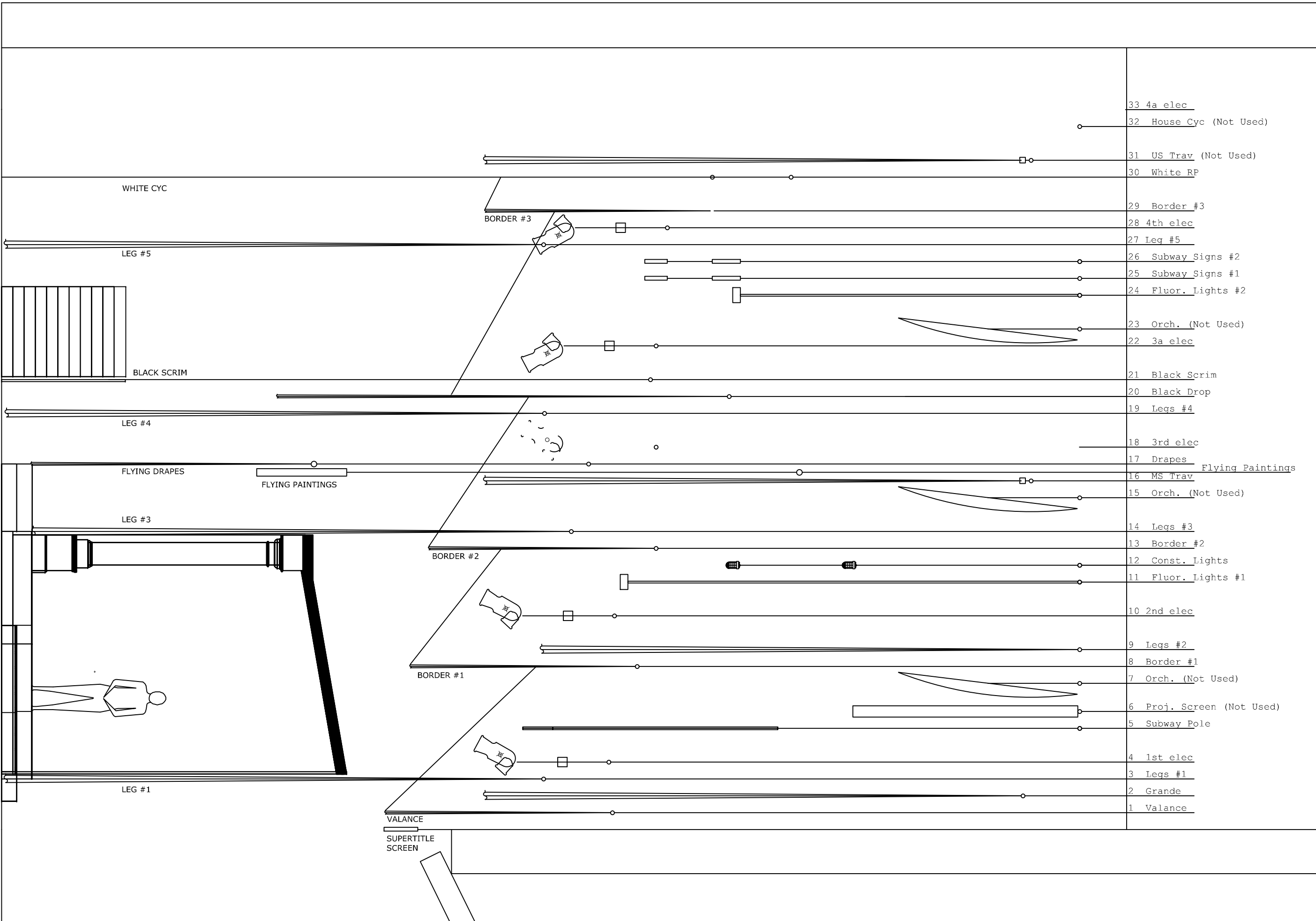
Linesets / Pinrail



Open to below




 SEATTLE OPERA SPIRIT JENKINS GENERAL DIRECTOR	PRODUCTION	YAP 2008		ITEM#:	
	DRAWING	GROUNDPLAN - GIANNI SCHICCHI			
	DESIGNER	YOSHI TANOKURA			
	CREATED	2/21/2008	SCALE		1/8"=1'-0"
	PLOTTED	5/23/2012 1:58 PM	DRAWN BY		creay
				5 of 5	



- 33 4a elec
- 32 House Cyc (Not Used)
- 31 US Trav (Not Used)
- 30 White RP
- 29 Border #3
- 28 4th elec
- 27 Leg #5
- 26 Subway Signs #2
- 25 Subway Signs #1
- 24 Fluor. Lights #2
- 23 Orch. (Not Used)
- 22 3a elec
- 21 Black Scrim
- 20 Black Drop
- 19 Legs #4
- 18 3rd elec
- 17 Drapes
- 16 MS Trav
- 15 Orch. (Not Used)
- 14 Legs #3
- 13 Border #2
- 12 Const. Lights
- 11 Fluor. Lights #1
- 10 2nd elec
- 9 Legs #2
- 8 Border #1
- 7 Orch. (Not Used)
- 6 Proj. Screen (Not Used)
- 5 Subway Pole
- 4 1st elec
- 3 Legs #1
- 2 Grande
- 1 Valance

SEATTLE OPERA
Seattle Opera's General Director



PRODUCTION YAP 2008

DRAWING: CL SECTION - GIANNI SCHICCHI
DESIGNER: YOSHI TANOKURA
CREATED: 2/21/2008
SCALE: 1/4"=1'-0"

PLOTTED: 5/23/2012 2:47 PM
DRAWN BY: [Name]
CREATED BY: [Name]

ITEM#: [Blank]
5 of 5

H:\PROJECTS\SEASONS\2008\arch\2007_08\YAP_LIN\ANT_SCHICCHI\DRAWING\YAP_SECTION_SCHICCHI_SECTION.dwg YAP_SECTION_SCHICCHI_SECTION.dwg