

# L'Arria

NEWSLETTER OF THE  
SEATTLE  
*Opera Guild*

December 2011 • Volume 59 • Issue 3

## Mission Statement

*The Seattle Opera Guild is a non-profit organization supporting and promoting opera. The guild provides financial support for Seattle Opera, funds vocal scholarships and promotes opera education for all age groups to ensure future opera audiences.*

## President's Message



Photo Credit: Suzy Wakefield

Our 2011/2012 year is off to an exciting start. The SOG *Carmen* previews fit precisely into that which we do: inspire and educate members. As you attended the Seattle Opera outstanding performance of *Carmen*, your appreciation of this art form was greatly increased.

I am extending a personal invitation to all SOG members to attend a General Board Meeting. Your attendance will enhance your working knowledge and allow you to become more involved with your Opera Guild.

The Annual Holiday Luncheon will be held at the Seattle Tennis Club - Looking forward to seeing you there.

Best wishes to each of you and your families for a warm and loving Holiday Season.

*Florence Rose-Thompson*

# *Carmen* Visits Inglewood!

by Suzy Mygatt Wakefield

Saturday, October 8, members of the Vivace and Bellini Preview Groups celebrated Georges Bizet's *Carmen* at the elegant and stately Inglewood Golf Club in Kenmore. The outstanding preview entertainers were Corinna Quilliam (narrator and Micaela), Melissa Plagemann (*Carmen*), Jon Farmer (Don Jose) and Glenda Williams (accompanist). They performed in the ballroom against the grand background of its massive fireplace.

A large crowd attended this gala, many wearing red as classically worn by *Carmen*. It was a very special and dressy event, and the excitement in the splendid ballroom was apparent.

Emily Bennett and Evelyn Troughton of Vivace were Co-Chairs. Bellini's Liz Bagshaw greeted attendees and Robert Milnor was information contact. Vivace's Emily Scott handled reservations and finances.



Photo credit: Suzy Wakefield

*Glenda Williams, Jon Farmer, Melissa Plagemann, Betty Lou and Donald McGowan, and Corinna Quilliam.*

Continued on page 2

# Carmen

Continued from page 1

The event included a social, the *Carmen* preview and a delicious buffet dinner with a Spanish theme. Special Spanish wines were served at a no-host wine and beverage bar.

Corinna Quilliam was a superb announcer, telling us the story of one of the world's most popular operas. *Carmen*, a sensuous and bold Gypsy girl, captures the heart of a soldier who in the end, cannot tolerate her wandering ways. Our singers each did a superb job and Melissa Plagemann's red gown and shawl captured *Carmen*'s stunning appearance perfectly. Jon Farmer and Glenda Williams added their artistry to the musical ensemble.

Special touches were decorative nametags and table centerpieces created by Betty Lou and Donald McGowan. The dinner menu courses were written in English and Spanish: tortilla Espanol, paella, pollo marbella, magdalenas and pudin de arroz. Everyone had a wonderful time at this festive event—"Muchas Gracias" to the organizers and entertainers!

# A Spectacular MONC Summer Musicale!



Photo credit: Ann H. Milam

Jennifer Bowman, Rachel Willis-Sorensen and Anthony Kalil.

by Ann H. Milam

What an opportunity to enjoy two gifted young singers, soprano Rachel Willis-Sorensen and Anthony (Tony) Kalil! We gathered at the Northcut Landing on Sunday, August 21 for the annual MONC Musicale and were thrilled by their over-the-top performances. Accompanied by Jennifer Bowman, Rachel's arias included powerfully delivered "Dich, teure Halle" from *Tannhäuser* and "Song to the Moon" from *Rusalka*. Tony amazed us with his "Che gelida manina" from *La Boheme* and blew out the windows with his "Nessun dorma" from *Turandot*. Their duet, "Brindisi" from *La Traviata* was lovely and as encore, they harmonized beautifully on "Somewhere Over the Rainbow," a candy-sweet conclusion to their unique performances.

Rachel won a MONC Audition Grand Prize in NYC in 2010 and recently completed her vocal training in Houston Grand Opera's Studio. She has now begun three years of opera study/performance in Dresden. Tony was a prize-winner and Audience Favorite in the MONC-NW District and Regional Competitions last season and received one of our coveted SOG singers training grants. He again contends in the November 13th MONC-NW District Competition in Seattle.

Chair of this summer event was Lynda Galvagno. Her committee of volunteers included Doug & Conni Clarke, Dick Engstrom, Dan Fievez, Othella Jones, Geri Sorrentino and Inta & Dick Wiest. Palouse Winery on Vashon Island donated the wine.



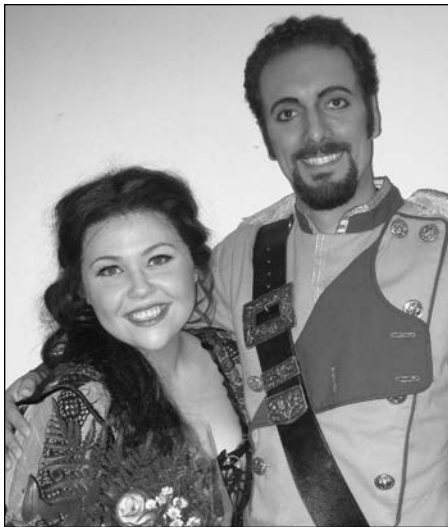
Photo credit: Suzy Wakefield

Co-chair Emily Bennett.

## Literary Corner for Opera Lovers

Just Released! *The Metropolitan Opera: Crosswords for Opera Lovers* was published by Sterling, NYC (\$7.95). The book is endorsed by the Metropolitan Opera and written by David J. Kahn, one of the biggest names in the puzzle business. His other books include *The Grid Reaper: 50 Crosswords to Die For*, *Crosswords to Make You Sweat* and *Crosswords on the Flip Side*. This new book contains 40 top-notch crosswords featuring major operas, the Met's singers, conductors and productions. This book makes a great gift for both newcomers and die-hard opera buffs. Hojotoho!





Julia West as Mercedes and Jonathan Silvia as Zuniga in *Carmen*.

# Our Young Stars Shine Brightly!

by Ann H. Milam

We are extremely proud of recent recipients of our Singers Training Fund awards, Julia West, Jonathan Silvia, Megan Chenovick, and Anthony Kalil. All have shown remarkable progress with their vocal training and are now well established with local musical groups.

Julia debuted as Mercedes in Vashon Opera's production of *Carmen*, where she sang, acted and danced with excellence and exuberance.

Jonathan also performed in Vashon Opera's *Carmen*, presenting a handsome and effective Zuniga. He has been busy professionally, including performing with the Seattle Opera chorus and as a principal in that company's *The Magic Flute* and *La Traviata*.

Megan Chenovick starred as Marian in *The Music Man* by Lyric Light Opera. She previously starred as Guenevere in that company's production of *Camelot*. Once again, Megan "stole the show" and received enthusiastic ovations from the audiences.

Anthony recently starred as Cavaradossi in Skagit Opera's outstanding production of *Tosca*. This was a new role for him and he excelled, earning loud "bravi" and a standing ovation.

We look forward to performances by Anthony and Megan at our SOG Spring Fundraiser on March 31!



Anthony Kalil as Cavaradossi in *Tosca*.



Megan Chenovick as Marian in *The Music Man*.

Photo Credit: stageimages.com

Photo Credit: Stacy Poirier

## Creating a SOG Preview

by Ellen McLain

The opera previews we enjoy are produced by a hard-working committee of Evette Glauber (chair), Donn Talenti and (until recently) Betty Lou McGowan, whose contributions over many years cannot be overstated. The committee works closely with Ellen McLain, Preview Coordinator, who contributed this description of her activities.

For 12 years I have coordinated SOG's preview program. For each opera, I create the lectures and operatic performances.

Every summer the committee and I organize singer auditions with pianist Glenda Williams. Each singer prepares two arias in two languages and provides a professional resume and photo. During the auditions, his/her voice, technique

and suitability for upcoming performances are assessed.

I next prepare a list of singers for each opera, including some who have been SOG favorites in the past. Two teams of three singers plus a pianist are chosen for each preview. One singer serves as narrator, telling the story of the opera and introducing the other singers. Each performer receives \$100 for the first performance and \$75 for subsequent performances of a preview.

The presentations include musical excerpts from Seattle Opera's next production. For lesser-known operas, I choose music that is most interesting or dramatically compelling. For example, Gluck's *Orpheus and Eurydice* features a prominent role for the chorus, so I'll

include some choral excerpts for these previews. A month before each new preview, we rehearse with our excellent pianists, Glenda Williams and Kristine Anderson.

Then with luck we're ready to entertain and elucidate these outstanding operas for our SOG audiences. Through this program, SOG provides not only education, but also an opportunity for established and emerging vocal artists from our area to perform for our enthusiastic and appreciative SOG audiences.

### The costs of the SOG Preview Program last season were:

\$4,400.00	<i>Lucia di Lammermoor</i>	10 previews
4,157.74	<i>Barber of Seville</i>	9 previews
4,205.28	<i>Don Quixote</i>	9 previews
4,450.00	<i>Magic Flute</i>	10 previews
326.36	Auditions	
111.29	Administration	
<b>\$18,350.57</b>		<b>Average \$483 per preview</b>

# Speight Jenkins Receives A Prestigious Award!

Betty Lou McGowan reports that her international music fraternity, Sigma Alpha Iota, announced that Speight Jenkins received a 2011 National Endowment for the Arts Lifetime Honor on June 24. He and the other NEA Opera Honorees were celebrated in an awards ceremony and concert in Washington, D.C. on October 27. Speight was appointed General Director of Seattle Opera in 1983 and has strengthened and expanded the company as a premier Wagner center. He is also known for his prolific writing about opera in reviews and articles. *Bravo* Speight!

## Met Live Opera

At a Theatre Near You!

Donizetti's *Anna Bolena* – New Production  
**October 15, 2011, 9:55 am**

Encore: November 2, 6:30 pm

Mozart's *Don Giovanni* – New Production  
**October 29, 9:55 am**

Encore: November 16, 2011, 6:30

Wagner's *Siegfried* – New Production  
**November 5, 9 am**

Encore dates to be determined

Glass's *Satyagraha*  
**November 19, 2011, 9:55 am**  
Encore: December 7, 6:30 pm

Handel's *Rodelinda*  
**December 3, 2011, 9:30 am**  
Encore: January 4, 2012, 6:30 pm

Gounod's *Faust* – New Production  
**December 10, 9:55 am**

Encore: January 11, 2012, 6:30 pm

*The Enchanted Island* – New Production  
**January 21, 2012, 9:55 am**

Encore: February 8, 2012, 6:30

Wagner's *Götterdämmerung* – New Production  
**February 11, 9 am**

Encore dates to be determined

Verdi's *Ernani*  
**February 25, 9:55 am**  
Encore: March 14, 6:30 pm

Massenet's *Manon* – New Production  
**April 7, 9 am**

Encore: April 25, 6:30 pm

Verdi's *La Traviata*  
**April 14, 12:55 am**  
Encore: May 2, 6:30 pm

## UPCOMING OPERA EVENTS

**December 2 & 4:**

*Amahl and the Night Visitors*  
in UWash. Meany Studio Theater.

**December 4:**

*Queen of Spades* by Concert Opera of Seattle  
at Seattle Central Public Library (free!).

**December 15:**

SOG Holiday Luncheon at Seattle Tennis Club.

**January 14-28, 2012: Attila**  
at Seattle Opera.

**January 21-19:** Brahms's *Liebeslieder Waltzes*  
by The Inverse Opera and Seattle Dance Project  
at ACT in Seattle.

**January 22:** Regional MONC Competition  
in UWash. Meany Theater.

**January 28:** *Outreach: Music of Remembrance,*  
*Between Two Worlds* (with Megan Chenovick)  
at Good Shepherd Center in Seattle.

**February 11:** *Purcell's Dido and Aeneas*  
by Theater of Early Music at Town Hall.

**February 11:** *Hansel and Gretel*  
at Vashon Opera.

**February 11 & 12:** *Young Artist Showcase*  
at Tacoma Opera.

**February 16-18 & 19:** *Albert Herring*  
in UWash. Meany Studio Theater.

**February 25-March 10:** *Orpheus and Eurydice*  
at Seattle Opera.

**March 18:** MONC Grand Finals in NYC.

**March 24:** *Outreach: Music of Remembrance,*  
*Not Martyrs, Not Saints* (with Megan Chenovick)  
at Good Shepherd Center in Seattle.

**March 30 and April 1:** *La Boheme*  
at Tacoma Opera.

**March 31:** SOG Spring Fundraiser at Broadmoor Golf Club.

**March 31-April 7:** *Don Pasquale*  
by Seattle Opera Young Artists in UWash. Meany Theater.

**May 5-19:** *Madama Butterfly*  
at Seattle Opera.

**May 18 & 20:** *Eugene Onegin*  
at Vashon Opera.

**May 21:** *Suor Angelica* (in concert)  
in UWash. Brechemin Auditorium.

# Reviving Your SOG Preview Group With E's

by Carmen Flak

The first SOG Preview I experienced was a thrill and an epiphany! It was as though I were the Queen in the music room of my castle. *The Barber of Seville* was just opening at Seattle Opera and there I sat, in the company of opera lovers like myself, enjoying our own private performance. The Enthusiasm and Excellence of the singers enchanted us. We all want these charming previews to continue and it's up to us, each member of each preview group, to help preserve this magical experience.

It's inevitable that as the years go by we lose members due to age, change of residence or job, so we must establish a plan to bring in new members. This requires Energy, Excitement and of course Effort. Please begin a program of action

with your most Enthusiastic members. Join with them to brainstorm ideas for attracting new people. Each member should bring friends and colleagues to the next preview. Also seek out members from other organizations you belong to. We at Allegro have had success with our colorful flyers advertising the next preview. We encourage our members to distribute them and post them in public libraries and on community message boards. Opera enthusiasts are out there; let's make the effort to recruit them!

Some of our preview members regularly attend the Met Simulcasts, where over the years we've encountered other regulars. We targeted these folks as potential new members and gave them flyers of our upcoming previews. This

was a successful way of recruiting--your group may have found other winning strategies. Please share them with us!

Be sure your new prospect provides a phone number and/or email address. As the next preview date approaches, send eye-catching invitations and E-cards designed to Excite the newcomers. In our group, our most outgoing members serve as official greeters; their job is to seek out the newcomers, introduce them to the others and make them feel welcome. Finally, follow up with a cheerful phone call or email to each guest, thanking them for coming and encouraging them to join SOG.

We have a terrific product--let's share our successful ideas and Expand our organization!

## Attila Opera Quiz

1. When and where did *Attila* premier?
2. Who wrote the libretto?
3. When and where was *Attila* first produced in the U.S.?
4. Which American bass has sung the role of Attila most often?
5. Where else has John Relyea sung the role of *Attila*?
6. What British leader was once dubbed "Attila the Hen"?
7. Attila was a fierce warrior. How and where did he die?

Email your answers to the editor ([annmilam@uw.edu](mailto:annmilam@uw.edu))  
The first person to answer all questions correctly will receive  
a special Seattle Opera prize!

## Entertainment Books Now Available

Proceeds Will Benefit SOG!

The new 2012 edition  
is available for \$25.

The cards in the front are  
worth much more this year.

Please contact:  
Suzanne Kellar  
email: [srkellar@aol.com](mailto:srkellar@aol.com)  
or call 206.941.9550

## SOG Holiday Luncheon



**December 15, 2011**  
Seattle Tennis Club

Featuring Beth Kirchhoff &  
Singers from *Porgy and Bess*

Co Chairs: Agi Day and N. Donn Talenti



## SOG Spring Fundraiser

**March 31, 2012**  
Broadmoor Golf Club  
Featuring Performances by  
Megan Chenovick &  
Anthony Kalil

Co-Chairs: Agi Day and Ann Milam



# Attila

by Giuseppe Verdi

Thursday January 5, 2012

## AMICI DELL'OPERA\*\*\*

Host: Carol Veatch  
6834 51st Ave. NE • Seattle, WA 98115  
\*206.523.8673  
Arrival: 10:15 am  
Preview: 11:00 am  
Lunch: 12:00 pm  
Info: Colleen Williams 206.525.2663  
Stephanie Waterman 206.368.2955

## LAKESIDE

Host: The Summit on 1st Hill  
1200 University St. • Seattle, WA 98101  
\*206.652.4447  
Arrival: 12:30 pm  
Preview: 1:30 pm  
Info: Dale Hogle 206.264.9520  
Patricia Griswold 206.322.8014  
Peggy O'Brien-Murphy 206.322.1234

Friday, January 6, 2012

## BEL CANTO-ENCORE

Host: Sarah Ovens  
East Congregational Church  
15318 SE Newport Way • Bellevue, WA 98006  
\*425.746.0885  
Arrival: 10:00 am  
Preview: 11:00 am  
Info: Ellen Peterson 206.282.0488

# Orpheus and Eurydice

by Christoph Willibald Gluck

Sunday, February 12, 2012

## BELLINI\*\*\*

Hosts: Louis and Ruthmarie Gratzner  
Mirabella Retirement Home  
116 Fairview Avenue N. • Seattle, WA 98109  
\*206.254.1400  
Arrival: 1 pm  
Preview: 2 pm  
Info: Liz Bagshaw 206.325.7291  
Bob Milnor 206.325.6188

Thursday February 16, 2012

## AMICI DELL'OPERA\*\*\*

Hosts: Stephanie and Lyle Waterman  
14014 Riviera Place NE • Seattle, WA 98125  
\*206.368.2955  
Arrival: 10:15 am  
Preview: 11:00 am  
Lunch: 12:00 pm  
Info: Stephanie Waterman 206.368.2955  
Colleen Williams 206.525.2663

## LAKESIDE

Host: The Summit on 1st Hill  
1200 University St. • Seattle, WA 98101  
\*206.652.4447  
Arrival: 12:30 pm  
Preview: 1:30 pm  
Info: Dale Hogle 206.264.9520  
Patricia Griswold 206.322.8014  
Peggy O'Brien-Murphy 206.322.1234

## PARTIES & PREVIEWS\*\*\*

Skyline at First Hill Retirement Home  
725 9th Avenue • Seattle 98104  
\*(206) 407-1700  
Arrival: 6:30 pm  
Dinner: 7:30 pm  
Preview: 8:30 pm  
Info: Patricia Church 206.323.5387  
Sandra Boyd 425.450.0671

Saturday January 7, 2012

## MAGNOLIA/QUEEN ANNE

Hosts: Selected Members  
111 W Highland Dr. • Seattle, WA 98199  
\*206.283.3047  
Arrival: 6:15 pm  
Preview: 8:00 pm  
Info: Karen Carlson-Iffert 206.605.7543  
Van Johnson 206.283.3047

## ALLEGRO

Host: Jeanne Berg  
23723 51st Place South • Kent, WA 98032  
\*206.240.5110  
Arrival: 6:30 pm  
Preview: 8:15 pm  
Info: Jeanne Berg 206.240.5110  
Carmen Flak 253.850.8888

Friday, February 17, 2012

## BEL CANTO-ENCORE

Host: Marcia Johnson  
East Congregational Church  
15318 SE Newport Way • Bellevue, WA 98006  
\*425.746.0885  
Arrival: 10:00 am  
Preview: 11:00 am  
Info: Ellen Peterson 206.282.0488

## PARTIES & PREVIEWS\*\*\*

Skyline at First Hill Retirement Home  
725 9th Avenue • Seattle 98104  
\*(206) 407-1700  
Arrival: 6:30 pm  
Dinner: 7:30 pm  
Preview: 8:30 pm  
Info: Patricia Church 206.323.5387  
Sandra Boyd 425.450.0671

Saturday February 18, 2012

## MAGNOLIA/QUEEN ANNE

Hosts: Selected Members  
111 W Highland Dr. • Seattle, WA 98199  
\*206.283.3047  
Arrival: 6:00 pm  
Preview: 8:00 pm  
Info: Karen Carlson-Iffert 206.605.7543  
Van Johnson 206.283.3047

## WEST SEATTLE

Host: The Kenny Home  
7125 Fauntleroy Way SW • Seattle, WA 98136  
\*206.937.2800  
Arrival: 6:30 pm  
Preview: 7:00 pm  
Hors d'oeuvres & Desserts  
Info: Suzanne Kellar 206.941.9550  
Mary Anne Schmitt 206.937.5897

Sunday, January 8, 2012

## VIVACE

Hosts: Emily and Pat Bennett  
6116 NE 190th St. • Kenmore, WA 98020  
\*425.486.5036  
Arrival: 4:00 pm  
Preview: 5:00 pm  
Info: Evelyn Troughton 206.282.6191

## BELLINI\*\*\*

Host: Dorothy Fuller  
Arrival: 1 pm  
Preview: 2 pm  
6311 146th Ave NE • Redmond 98052  
\*425.883.0033  
Info: Liz Bagshaw 206.325.7291  
Bob Milnor 206.325.6188

Sunday, January 8, 2012

## MERCER ISLAND

Host: Dagmara and Imants Bitners  
9008 SE 59th St. • Mercer Island, WA 98040  
\*206.232.7478  
Arrival: 7:00 pm  
Preview: 8:00 pm  
Info: Gale Kessler 630.991.8739.  
Nancy English 206.232.8429

## ALLEGRO

Host: The Charlesworths  
23914 124th Ave. SE • Kent, WA 98031-3600  
\*253-639-1423  
Arrival: 6:30 pm  
Preview: 8:15 pm  
Info: Jeanne Berg 206.240.5110  
Carmen Flak 253.850.8888

## WEST SEATTLE

Host: The Kenny Home  
7125 Fauntleroy Way SW • Seattle, WA 98136  
\*206.937.2800  
Arrival: 6:30 pm  
Preview: 7:00 pm  
Hors d'oeuvres & Desserts  
Info: Suzanne Kellar 206.941.9550  
Mary Anne Schmitt 206.937.5897

Sunday, February 19, 2012

## VIVACE

Ida Culver House, Broadview  
12505 Greenwood Ave N. • Seattle, WA 98133  
\*206.452.3206  
Arrival: 4:00 pm  
Preview: 5:00 pm  
Info: Evelyn Troughton 206.282.6191

## MERCER ISLAND

Host: Nancy English  
7015 W Mercer Way • Mercer Island, WA 98040  
\*206.232.8429  
Arrival: 7:00 pm  
Preview: 8:00 pm  
Info: Gale Kessler 630.991.8739.  
Nancy English 206.232.8429

\*Host phone numbers are provided for last minute driving directions.  
Please call listed info contacts for all other enquiries. \*\*\* RESERVATIONS PLEASE.

# Weighty Matters In Opera

by Gerald Faris

Opera singers are overweight because big voices demand big bodies. Everyone knows that. No, it's because they eat too much and don't get enough exercise. Just why are some opera singers fat? It's a weighty question as the TV-HD broadcast-driven "look the part" movement gains momentum. It's also a matter of health, myth, how singers behave – and contradiction.

Health is the easy one. Obesity aggravates diabetes, heart disease, stroke and arthritis. Cancer risks also increase and carrying extra pounds harms spines and knees. Think the late Luciano.

Myth is more complicated. Some believe a large amount of fat around the larynx increases resonance, although it's not supported by scientific evidence. In an interesting twist, a 2001 study suggested that singers tend to develop expanded rib cages, thus appearing larger than they really are.

Irregular eating habits also lead to weight gain. Many singers avoid food before performing, concerned it may affect breathing, make them sleepy or lead to gastric discomfort. But after the curtain falls, they eat dinner – maybe a lot of dinner – and then go to bed. Post-performance receptions, with rich food that's hard to resist, are also a factor.

"Ours is a lonely profession," legendary mezzo Marilyn Horne once said, referring to time spent in hotels away from home, family and friends. "Eating is company."

Contradiction is the most intriguing factor of all. While some ample artists consult personal trainers, dieticians and even gastric surgeons, certain glorious voices (including mezzo Stephanie Blythe, who has graced Seattle's *Ring*) continue to come in large packages. And in her day, Seattle's own Jane Eaglen, once described as looking like a three-tier wedding cake, was the reigning Brünnhilde. Extreme weight loss can also damage voices, as rumored for Maria Callas.

Coaches and artistic directors caution young singers that weight is a career killer but some recent winners of national vocal competitions, including emerging star Angela Meade, are indeed hefty.

Isn't great singing what most people seek in opera, theatrical values and credibility not withstanding? The lady of the famous little black dress, a considerably slimmed down Deborah Voight, put it this way: "I can only say that if I were running an opera house, I'd want the best singer for the role, whether they had hips or not." *Brava* to this diva, but note that she, too, resorted to gastric surgery to improve her health and image.

Gerald Faris, who fell in love with opera at the age of eight when he heard Lily Pons sing on the radio, is a coffeehouse poet in Long Beach, CA. He's known in Seattle as "that bimbo guy" after his last essay on "CNN Operas" in *L'Aria*.



Ms. Voight in April, '04.



In March, '05 after she had gastric bypass surgery and lost 100 pounds.

Photo Credits: NY Times

## In Memoriam

### Wilma K. Footh

1932-2011

Wilma Footh was an active member of the Mercer Island Preview Group, generously hosting a preview in her home each year. She passed away on April 21. The family suggests remembrances to the Seattle Cancer Care Alliance, Wilma Footh Fund, POB 19023, Seattle, WA 98109.

## MEMORIALS & TRIBUTES

Please consider making a memorial or tribute to SOG. It is also an excellent idea to consider SOG in your estate planning.

## L'Aria

Now On Line

To read the latest edition of *L'Aria* before it reaches your mailbox, check the Seattle Opera Guild website. Visit us at:

[www.seattleopera.org/involved/guild](http://www.seattleopera.org/involved/guild)

Maintained by Van Johnson, this web site is full of useful information about SOG preview groups and upcoming special events.

## It's Fruitcake Time!

Delicious fruitcakes are available (\$6) as fundraisers for SOG.

Please contact:  
Barbara Howell 206.232.8723



P.O. Box 9097, Seattle, WA 98109-0097

Address service requested

Non-Profit Org  
U.S. Postage  
PAID  
Seattle, WA  
Permit No. 286

The Seattle Opera Guild Newsletter, *L'Aria*, is published quarterly by: SEATTLE OPERA GUILD

**Editorial Staff:**

Editor: Ann H. Milam  
Webmaster/Database Manager: Van Johnson  
Photographer: Suzy Wakefield  
Proofreaders: Dennis Glauber and Carmen Flak  
Graphics/Printing: Spot-on Print & Design 425.558.7768

**Submissions:**

**Text and Photographs** to Ann H. Milam:  
[annmilam@uw.edu](mailto:annmilam@uw.edu)

If email is not available, the editor will accept a typed article.

Please mail to:

1262 Parkside Dr. E., Seattle, WA 98112  
206.324.6060

**Photographs** should include subjects' names and name of the photographer.

**Editorial Policy:**

Editorial changes to submitted articles, other than correction of grammatical errors, will be made after consultation with the contributor.

**Deadline for April issue:** March 1.

**SOG  
BOARD OF DIRECTORS  
EXECUTIVE  
COMMITTEE 2011-2012**

- President.....Florence Rose-Thompson
- Vice President Admin.....Peggy O'Brien-Murphy
- Vice President Special Events .....Agi Day
- Vice President Membership.....Carol Veatch
- Vice President Education.....N. Donn Talenti
- Vice President Communications .....Van Johnson
- Secretary.....Ann H. Milam
- Treasurer .....Evelyn Troughton
- Trustee.....Diane Foia
- Officer At Large .....Ruthie Kallander
- Nominating Chair .....Elizabeth Bagshaw
- Past President.....Marlene Holbrook